










Standard Paper

Factors influencing the diversity and distribution of epiphytic lichens and bryophytes on the relict tree *Zelkova abelicea* (Lam.) Boiss. (*Ulmaceae*)

Laurence Fazan¹ , Dariusz J. Gwiazdowicz² , Yann Fragnière¹ , Wiesław Fałtynowicz³ , Dany Ghosn⁴ ,
Ilektra Remoundou⁴, Anna Rusińska⁵, Paweł Urbański⁶ , Salvatore Pasta⁷ , Giuseppe Garfi⁷ 
and Gregor Kozłowski^{1,8,9} 

¹Department of Biology and Botanic Garden, University of Fribourg, Chemin du Musée 10, 1700 Fribourg, Switzerland; ²Poznań University of Life Sciences, Faculty of Forestry, Poznań, Poland; ³Department of Botany, Wrocław University, Wrocław, Poland; ⁴Department of Geoinformation in Environmental Management – CIHEAM Mediterranean Agronomic Institute of Chania, Alsyllio Agrokepiou, 73100 Chania, Greece; ⁵Natural History Collections, Faculty of Biology, Adam Mickiewicz University, Poznań, Poland; ⁶Department of Botany, Poznań University of Life Sciences, Poznań, Poland; ⁷Institute of Biosciences and BioResources – National Research Council, Corso Calatafimi 414, 90129 Palermo, Italy; ⁸Natural History Museum Fribourg, Chemin du Musée 6, 1700 Fribourg, Switzerland and ⁹Eastern China Conservation Centre for Wild Endangered Plant Resources, Shanghai Chenshan Botanical Garden, 3888 Chenhua Road, Songjiang, 201602 Shanghai, China

Abstract

Trees have a crucial importance in the functioning of ecosystems on Earth. They are among the largest and longest-living taxa and provide habitat and shelter to numerous species belonging to diverse groups of organisms. Relict trees are of particular interest through their history of survival and adaptation, and because they potentially shelter rare or threatened organisms today. We investigated for the first time the diversity and distribution of epiphytic lichens and bryophytes found on the Cretan (Greek) endemic and relict phorophyte *Zelkova abelicea* (*Ulmaceae*). Our results showed that *Z. abelicea* hosts a high number of epiphytes. The Levka Ori mountain range in western Crete seems to be a hot spot for epiphytic lichens on *Z. abelicea*. Bryophytes had the highest diversity on Mt Kedros in central Crete but were absent from several other sites. Moreover, 17% of the studied lichens were recorded for the first time for Crete and 5% have never been recorded for Greece. Geographical position and browsing intensity seem to be important factors influencing the epiphytic community encountered. Tree morphology (dwarfed or arborescent) was also significant in influencing community composition although it was not possible to dissociate this factor from the effect of topography. Dwarfed individuals were found to have as much epiphytic diversity as arborescent trees. Ecological indicator values showed that high epiphytic diversity was found in some sites despite signs of eutrophication and disturbance due to pastoral activities and suggest the co-occurrence of both disturbance tolerant and sensitive species. Our results show how little is known about the biodiversity of Cretan phorophytes and highlights the need for further research on the topic.

Key words: Crete, dwarfed over-browsed trees, ecological indicator values, epiphytic assemblages, Greece, phorophyte

(Accepted 25 March 2022)

Relict trees are particularly interesting because they have survived and adapted to changing environmental conditions throughout millions of years and are the only representatives of previously widespread taxa (Kozłowski & Gratzfeld 2013; Grandcolas *et al.* 2014). Little research has yet been undertaken to make an inventory of the biodiversity linked specifically with relict trees. However, relict trees have been found to be of crucial importance in maintaining and giving shelter to widespread as well as rare, endemic or other relict taxa. This is the case, for example, with

Zelkova sicula Di Pasq. *et al.* (Barbagallo 2002; Barbagallo *et al.* 2009) or *Dracaena cinnabari* Balf.f. (Rejžek *et al.* 2016; Maděra *et al.* 2019).

Furthermore, relict tree stands often contain very old trees (Fazan *et al.* 2012; Tang *et al.* 2013; Camarero *et al.* 2018), and old trees are known to provide numerous microhabitats (Lindenmayer & Laurance 2017; Nordén *et al.* 2018). These microhabitats (sometimes denominated in literature as ‘tree related microhabitats’; Kraus *et al.* 2016; Larrieu *et al.* 2018; Büttler *et al.* 2020) can also be formed by tree-associated taxa such as bryophytes or lichens. Some in turn foster a wide variety of other living organisms (e.g. invertebrates, plants, fungi, birds) and play a key role in maintaining or even increasing biodiversity (Paillet *et al.* 2010).

The genus *Zelkova* (*Ulmaceae*) is a relict from the so-called Arctotertiary geoflora (Mai 1991) whose members were important

Author for correspondence: Gregor Kozłowski. E-mail: gregor.kozlowski@unifr.ch

Cite this article: Fazan L, Gwiazdowicz DJ, Fragnière Y, Fałtynowicz W, Ghosn D, Remoundou I, Rusińska A, Urbański P, Pasta S, Garfi G and Gregor Kozłowski G (2022) Factors influencing the diversity and distribution of epiphytic lichens and bryophytes on the relict tree *Zelkova abelicea* (Lam.) Boiss. (*Ulmaceae*). *Lichenologist* 54, 195–212. <https://doi.org/10.1017/S0024282922000159>

© The Author(s), 2022. Published by Cambridge University Press on behalf of the British Lichen Society. This is an Open Access article, distributed under the terms of the Creative Commons Attribution licence (<https://creativecommons.org/licenses/by/4.0/>), which permits unrestricted re-use, distribution, and reproduction in any medium, provided the original work is properly cited.

components of forests of the Northern Hemisphere during the Paleogene. Only six extant species of this genus are found today, and they show a remarkable disjunct distribution: *Z. serrata* (Thunb.) Makino, *Z. schneideriana* Hand.-Mazz. and *Z. sinica* Schneid. occur in eastern Asia, *Z. carpinifolia* (Pall.) Koch grows in the Transcaucasian region and Middle East, while *Z. sicula* and *Z. abelicea* (Lam.) Boiss. are endemic to the Mediterranean islands of Sicily (Italy) and Crete (Greece), respectively (Kozłowski & Gratzfeld 2013).

Zelkova abelicea grows in the mountainous regions of Crete above 900 m a.s.l., in rather cool and not too xeric sites such as north-facing slopes or around dolines (sinkholes), or at high elevations on south-facing slopes (Egli 1997; Søndergaard & Egli 2006; Fazan *et al.* 2012; Goedecke & Bergmeier 2018). Due mainly to overbrowsing by goats, most individuals have a stunted dwarfed form, with multiple stems, a shrubby morphology and very slow growth (Fazan *et al.* 2012). Such individuals account for up to 95% of all populations, with some stands composed entirely of dwarfed plants (Kozłowski *et al.* 2014). Dwarfed individuals have been found to reach several hundred years in age and in some cases are older than arborescent trees (Fazan *et al.* 2012). Arborescent, 15–20 m high individuals are much rarer. Old arborescent *Z. abelicea* trees show signs of having been pollarded in the past, and their leaves were used as summer forage (Rackham & Moody 1996; Bauer & Bergmeier 2011). These old trees are often found growing next to abandoned shepherd huts to which they probably provided shade. The recruitment of seedlings is difficult due to the almost permanent overbrowsing during the growing season and dry summer conditions influencing plant growth and seedling establishment (Egli 1997; Søndergaard & Egli 2006; Fazan *et al.* 2012; Kozłowski *et al.* 2014, 2018).

The overall number of lichen and bryophyte species known for Greece is small, despite significant recent progress in the study of both taxonomic groups. The first and only published lichen checklist of Greece (Abbott 2009) recorded almost 1300 species, while the most recent, online checklist (Arcadia 2022) already includes *c.* 1500 taxa. This indicates there is ongoing dedication towards this group of organisms in the region, as supported by the studies in recent years of a dozen lichenologists occasionally working in Greece (Obermayer 1997; Papp *et al.* 1999; Sipman & Raus 1999, 2002; Christensen 2000, 2007, 2014, 2018; Grube *et al.* 2001; Spribille *et al.* 2006; Christensen & Svane 2007; Vondrák *et al.* 2008). Furthermore, although Crete also offers a wide spectrum of habitats, only a small number of lichen species are known from this island (Vondrák *et al.* 2008), only 677 species according to Arcadia (2022).

Several authors have recorded bryophytes in Greece throughout the 20th century (e.g. Coppey 1907, 1909; Preston 1981, 1984; Düll 1995), each time with an increasing number of species. In the 1980s, Preston (1984) reported 424 species, whereas more recent national inventories included 525 moss taxa (Sabovljević *et al.* 2008) or 690 species when considering both mosses (536 spp.) and liverworts (154 spp.; Blockeel 2013). Ros-Espin *et al.* (2013) reported over 590 moss taxa from mainland Greece and slightly over 280 taxa from Crete, of which *c.* 25% have been recorded only once. This again shows how little these groups of organisms have been studied until recently and suggests a need for more detailed investigations of lichens and bryophytes on the island.

Studies including or focusing on the phorophyte species of Crete exist but are rare (e.g. Kleinig 1966; Gradstein 1971; Werner 1998; Grube *et al.* 2001; Spribille *et al.* 2006;

Christensen 2007, 2014; Vondrák *et al.* 2008), and none has addressed *Z. abelicea* specifically. The only record of epiphytes growing on *Z. abelicea* comes from Spribille *et al.* (2006), which mentions four macrolichen species that are common for Crete.

In this study, we focus on a so far neglected portion of the biodiversity linked with *Z. abelicea*, by investigating the lichens and bryophytes that use this species as a phorophyte. It is the first time that an attempt to list these groups of organisms has been made by targeting *Z. abelicea* and covering all mountain ranges where the tree species occurs. More specifically, we aimed to answer the following questions: 1) What is the diversity of epiphytic lichens and bryophytes on *Z. abelicea*? 2) Do *Z. abelicea* trees host specific epiphyte taxa that are found nowhere else? 3) What is their distribution on *Z. abelicea* individuals throughout Crete? 4) Which environmental factors might influence the observed epiphytic diversity and community composition? 5) Does one site or another stand out in terms of ecological indicator values?

Methods

Specimen and data collection

Specimens were collected in autumn 2018 and spring 2019 from eight study sites, covering the whole distribution range of *Zelkova abelicea* on Crete (Fig. 1). Three study sites were located in the Levka Ori (Omalos, Niato and Impros), one on Mt Kedros (Gerakari), one on Mt Psiloritis (Rouvas), two in the Dikti Mountains (Viannou and Katharo), and one in the Thripti Mountains (Thripti). In each site, two to seven individuals (dwarfed or arborescent; Fig. 2A & B) of *Z. abelicea* were sampled, giving a total of 36 individuals. In Niato and Thripti, sampling was carried out only on dwarfed trees as no arborescent individuals were present. On non-dwarfed trees, the top layer of bark (Fig. 2C) hosting epiphytes was cut off with a knife, without harming the vital, living parts of the tree trunk. In dwarfed individuals, whole twigs covered with epiphytes were cut off with a knife (Fig. 2D). The collected material was placed in paper bags and kept dry until identification.

In each of the study sites, the following general information was also collected: geographical coordinates (latitude and longitude), altitude, topography (slope or doline floor) and browsing intensity (Table 1).

Gridded climatic data (i.e. annual mean temperature and sum of annual precipitation) for the period 1970–2000 were extracted from WorldClim (www.worldclim.com/version2) at a 30 s (i.e. *c.* 1 km²) resolution (Fick & Hijmans 2017) for each study site (Table 1).

Species identification

Epiphytic material was determined using standard stereoscopic and light microscopy. The taxonomic identity of the sampled material was assessed using identification keys. Lichens were determined using keys provided by Clauzade & Roux (1985), Smith *et al.* (2009) and Arcadia (2022). In a small number of necessary cases, thin-layer chromatography was used. Nomenclature of lichen species followed Index Fungorum (Index Fungorum Partnership 2022). Information on the morphological type of thallus (Cr – crustose, Fo – foliose, Fr – fruticose; Fig. 2E–G) was obtained from Arcadia (2022).

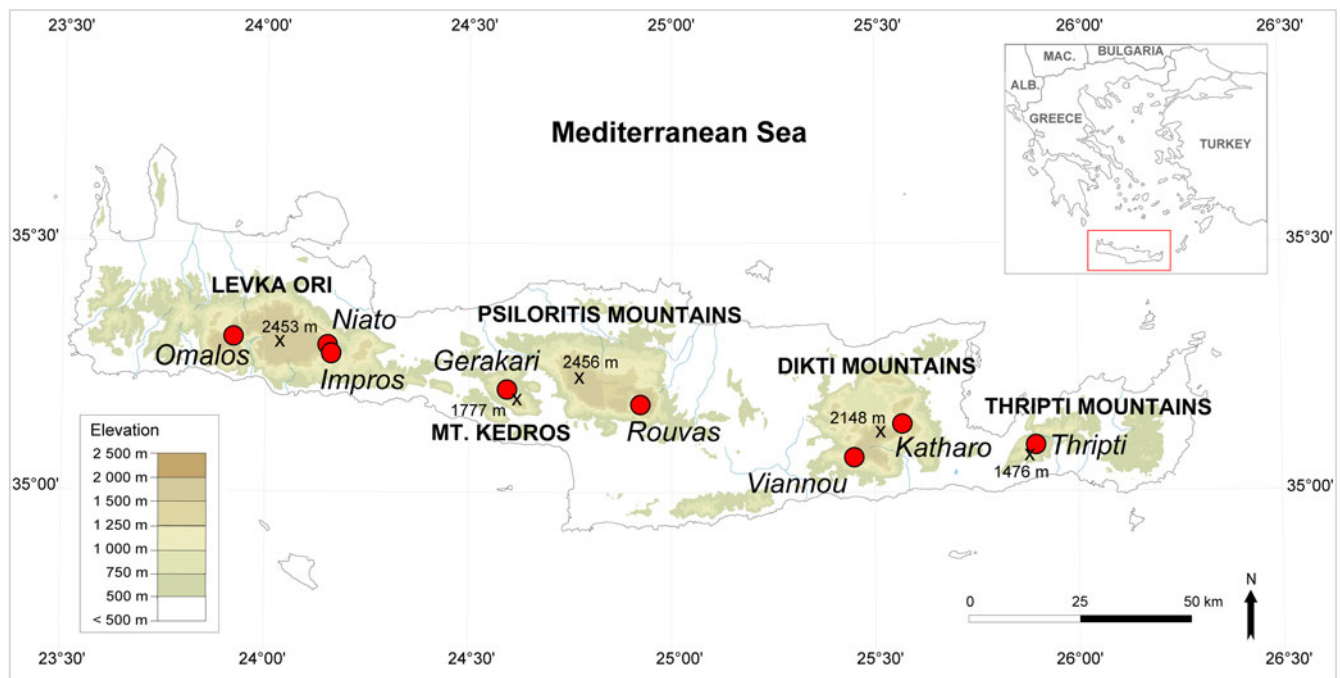


Fig. 1. Location of the eight study sites (filled dots) distributed across all five Cretan mountain ranges that contain populations of *Zelkova abelicea*. Names in bold font indicate mountain ranges with stands of *Z. abelicea*; summits (m) are indicated with an 'X'. The names of the study sites are given in italic font. In colour online.

Bryophytes were determined using the keys provided by Nyholm (1965, 1998), Smith (1978) and Ros-Espin *et al.* (2013). Nomenclature of bryophytes followed Ros-Espin *et al.* (2013). For each bryophyte taxon, the morphological type (P – pleurocarpous, A – acrocarpous) was obtained from Düll (1979) and Preston (1984).

Authorities for cited lichen and bryophyte species are given in Tables 2 & 3. The analyzed material was deposited in the collections of the University of Wrocław, Poland (lichens) and in the Natural History Collections of Adam Mickiewicz University in Poznań, Poland (bryophytes).

Statistical analyses and selection of environmental variables

Statistical analyses were performed using R (R Core Team 2020). A Kruskal-Wallis rank sum test (Hollander & Wolfe 1973) was carried out in order to determine if species numbers were significantly different between trees from different sites, as well as between mountain ranges.

The ordination method, distance-based redundancy analysis (db-RDA), was used to analyze and compare epiphytic communities (Legendre & Legendre 2012; Oksanen 2012, 2015). This was performed in R with 'capscale' (package *vegan*; Legendre & Anderson 1999; Anderson & Willis 2003). Since community data were of the type presence-absence (1 or 0), the Jaccard dissimilarity index (Real & Vargas 1996) was selected to quantify the distance between communities. Constrained methods display the variation in the data of the environmental variables and are useful to test hypotheses and discover trends. In addition, permutation tests for the significance of constraints were carried out using 'anova.cca' (package *vegan*; Legendre *et al.* 2011; Legendre & Legendre 2012) with 9999 permutations. The environmental variables were standardized prior to performing the

analyses. One tree from Gerakari was excluded from the final analysis because it was very different in terms of community composition to all other sampled trees since it had only four bryophyte species and no lichen species (probably due to a sampling bias) and influenced the analysis too strongly when included.

Spearman's rank correlation (Hollander & Wolfe 1973) was computed between environmental variables to check for codependent variables and exclude highly correlated (Spearman's $\rho > 0.7$) variables that could negatively influence the reliability of the results of the distance-based redundancy analysis (Borcard *et al.* 2011). Correlation coefficients for all considered variables are found in Supplementary Material Table S1 (available online). Latitude was highly negatively correlated with longitude ($P < 0.001$, Spearman's $\rho = -0.93$). Due to the fact that the latitudinal amplitude of the study sites was very low compared to their longitudinal amplitude (0.25° vs 1.97°), latitude was excluded from further analyses. Gridded temperature and precipitation were also excluded from further analyses due to their high correlation with longitude ($P < 0.001$, Spearman's $\rho = 0.88$) and altitude ($P < 0.001$, Spearman's $\rho = 0.97$), respectively, and the potential unsuitability and/or unreliability of gridded data in representing localized climatic events in the Cretan mountains due to the absence of weather stations from which to interpolate (Goedecke & Bergmeier 2018; Fazan *et al.* 2022).

Ecological indicator values

For every lichen species, the following ecological indicator values (EIVs) were obtained from Nimis (2016) and Nimis & Martellos (2021): pH of substratum, solar irradiation, aridity (i.e. air humidity), eutrophication and poleotolerance (i.e. tolerance to human disturbance). The same was achieved for mosses using the dataset of Düll (1991) for the following EIVs: light, temperature, continentality, humidity and pH of substratum.

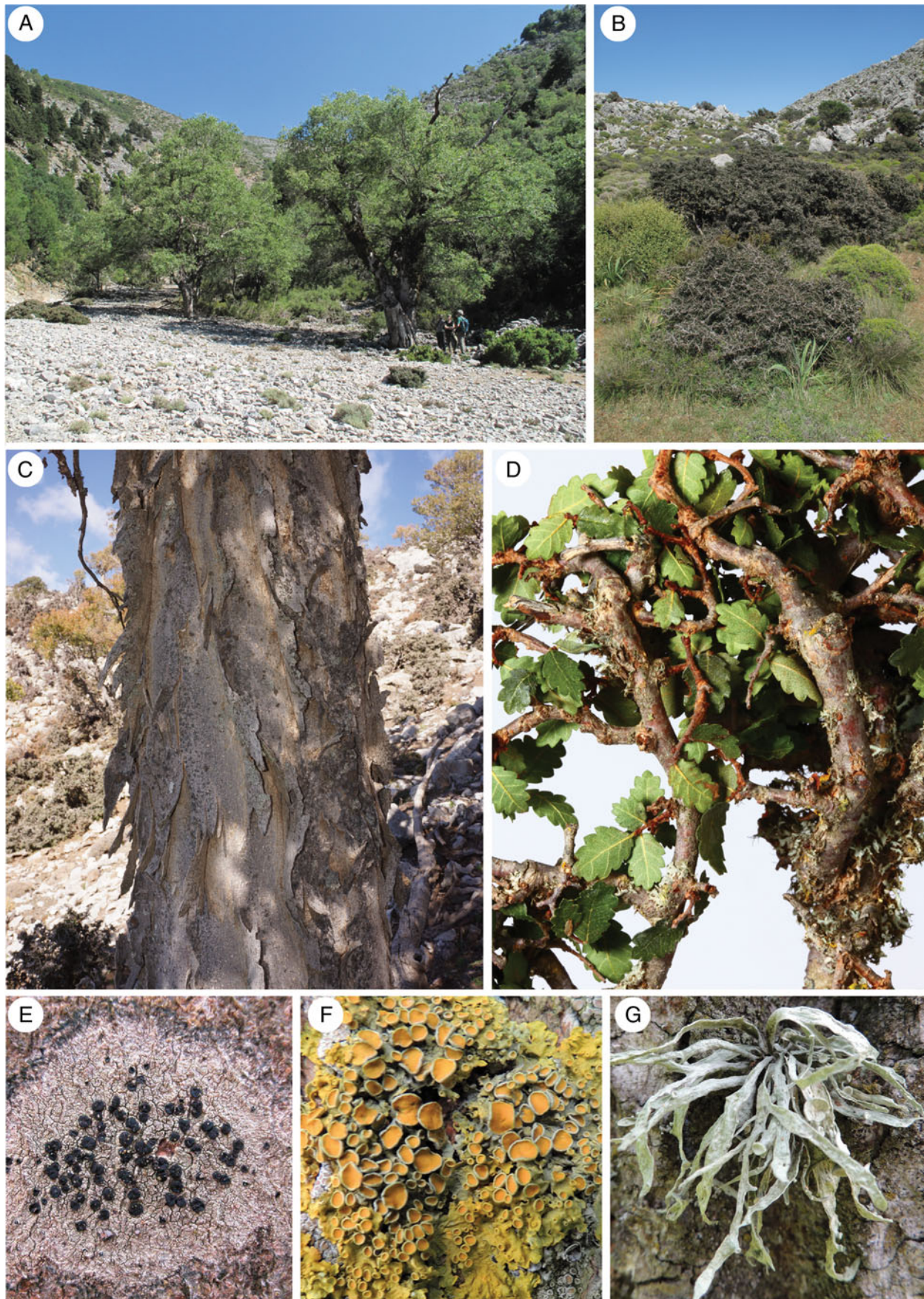


Fig. 2. A, forest fragment with large *Zelkova abelicea* trees (Omalos). B, dwarfed, heavily browsed individuals (Thripti Mts). C, trunk of a large tree with exfoliating bark (Dikti Mts). D, branches of a heavily browsed individual (Mt Kedros). Examples of different lichen growth forms: E, *Lecidella elaeochroma* (crustose). F, *Xanthoria parietina* (foliose). G, *Ramalina fraxinea* (fruticose). Photographs: G. Kozłowski (A–C), H-R. Siegel (D), W. Fattyłowicz (E–G).

Table 1. Environmental characteristics of the study sites in Crete where epiphytic material of *Zelkova abelicea* was sampled. Temp. = mean annual temperature; Prec. = average sum of annual rainfall (gridded climatic data was extracted for the period 1970–2000 from WorldClim, www.worldclim.com/version2). Browsing intensity = + moderate, ++ strong.

Mountain	Site	Latitude (DD)	Longitude (DD)	Altitude (m a.s.l.)	Topography	Browsing intensity	Temp. (°C)	Prec. (mm)
Levka Ori	Omalos	35.319010	23.918710	1160	slope	++	11.67	906
	Niato	35.287527	24.145500	1215	doline	+	12.03	954
	Impros	35.270546	24.153150	1175	slope	+	12.51	938
Kedros	Gerakari	35.194829	24.606710	1255	slope	++	12.63	1024
Psiloritis	Rouvas	35.164333	24.922790	1320	slope	++	13.07	1022
Dikti	Viannou	35.064291	25.469778	1320	slope	+	12.04	956
	Katharo	35.148004	25.567558	1160	slope	+	12.63	921
Thripti	Thripti	35.080588	25.887408	1150	doline	+	13.20	897

EIVs help to provide useful insights into the ecological niche of single species and help to evaluate the habitat quality of species assemblages (Nimis & Martellos 2001). For lichens, the values are based on ecological responses of lichens throughout their distributional range in Italy. For mosses, the EIVs focus on Central Europe and more precisely on some areas of Germany. We are aware that the ecological requirements of lichens as well as mosses occurring throughout Greece may differ. However, since no EIVs have yet been developed specifically for Greek lichens and mosses, the datasets of Düll (1991), Nimis (2016) and Nimis & Martellos (2021) appear to be the best currently available. Furthermore, Christensen (2014) argues that despite these shortcomings, the Italian dataset of ecological indicators for lichens can be applied to Greece. For lichen species that had more than one given value per indicator due to their broad ecological spectrum, the average value was computed. Values were then averaged by sampled tree and Kruskal-Wallis rank sum tests (Hollander & Wolfe 1973) were carried out for each EIV in order to see if there were significant differences between study sites.

Results

Epiphytic diversity and distribution

Overall, 70 epiphytic species were recorded on *Zelkova abelicea*: 60 lichen species belonging to 21 genera and 10 bryophyte species belonging to eight genera (Fig. 3, Tables 2 & 3). Four lichen taxa common in Greece and Europe were the most abundant: *Pleurosticta acetabulum* (found on 33 trees), *Xanthoria parietina* (30 trees), *Physcia tenella* (27 trees) and *Lecidella elaeochroma* (26 trees). All other species were recorded on 20 or fewer trees. Eighteen species occurred only once. For bryophytes, only moss species were found, and the most abundant mosses were *Leucodon sciuroides* (10 trees) and *Orthotrichum affine* (7 trees). The highest epiphytic diversity was found in Impros (42 spp.) while the lowest was found in Psiloritis (15 spp.; Fig. 4). Differences in epiphytic diversity per tree were non-significant among sites and mountains ($\chi^2 = 7.1869$, $df = 7$, $P = 0.4097$ and $\chi^2 = 5.898$, $df = 4$, $P = 0.2069$, respectively).

Ten lichen species (i.e. 17%, namely *Anisomeridium polypori*, *Candelaria concolor*, *Candelariella efflorescens*, *Huneckia pollinii*, *Ochrolechia androgyna*, *Physcia dubia*, *Physconia enteroxantha*, *Polycauliona polycarpa*, *Polyzozia populicola* and *Scoliciosporum*

chlorococcum were previously unrecorded for Crete. Three of these (i.e. 5%, namely *Anisomeridium polypori*, *Candelariella efflorescens* and *Polycauliona polycarpa*) were also previously unpublished for Greece and were found in our study on two different trees in Impros and on a single tree in Thripti (Table 2). All the sampled bryophyte species have been previously recorded for Crete or Greece.

All but one of the sampled trees hosted lichens, with variable species numbers (6–20 spp., with an average of 13 lichen spp. per tree; Fig. 5A). Trees with the highest diversity of lichen species were located in the three sites of the Levka Ori, as well as in Kedros. Trees from Psiloritis, Dikti and Thripti had lower species numbers, while one tree from Gerakari (Kedros) hosted no lichens. However, differences in number of lichens per tree between sites or mountain ranges were non-significant ($\chi^2 = 4.4481$, $df = 7$, $P = 0.727$ and $\chi^2 = 3.6547$, $df = 4$, $P = 0.455$, respectively). More lichen species were recorded in the Levka Ori sites compared to the other regions (Fig. 4). With 40 species, Impros had the highest lichen diversity, followed by Omalos (33 spp.), Niato, Kedros and Viannou (27 spp.), Thripti (24 spp.), Katharo (23 spp.) and Rouvas (15 spp.) (Table 4). Overall, 53 spp. of lichen were recorded in Levka Ori compared to 35 in Dikti, 27 in Kedros, 24 in Thripti and 15 in Psiloritis (Fig. 4, Table 2). However, differences in lichen diversity between sites or mountains were not significant ($\chi^2 = 7$, $df = 7$, $P = 0.4289$ and $\chi^2 = 53958$, $df = 4$, $P = 0.249$, respectively).

Bryophytes were found only on 16 out of 36 (i.e. 44%) sampled trees, and the number of species per tree varied from 1–4 with an average of 2.25 spp. (Fig. 5B). The number of bryophytes per tree was significantly different among sites, as well as among mountain ranges ($\chi^2 = 16.166$, $df = 7$, $P = 0.02364$ and $\chi^2 = 13.99$, $df = 4$, $P = 0.007328$, respectively). Bryophytes were most abundant at Gerakari on Mt Kedros, where 8 spp. were counted, followed by Omalos and Niato (both 4 spp.), Katharo (3 spp.) and Impros (2 spp.); no bryophytes at all were recorded on trees at Rouvas, Viannou and Thripti (Fig. 4, Table 4). Total bryophyte diversity was not significantly different among sites or mountain ranges ($\chi^2 = 7$, $df = 7$, $P = 0.4289$ and $\chi^2 = 5.4641$, $df = 4$, $P = 0.2429$, respectively).

The most frequently recorded lichen thallus morphology (i.e. 52%, 31 spp.) was crustose, while 40% (24 spp.) of lichens had a foliose and only 8% (5 spp.) a fruticose thallus morphology (Table 4). Half of the 10 most abundant lichen species were

Table 2. List of the epiphytic lichens recorded on *Zelkova abelicea* in Crete showing the taxonomy, morphological type and occurrence in the study sites. The nomenclature follows Index Fungorum (Index Fungorum Partnership 2022) while the morphological type of thallus (Morph.) follows Arcadia (2022) (i.e. Cr – crustose, Fo – foliose, Fr – fruticose). Study sites (Site) are listed following a longitudinal gradient from the west to the east of Crete: O – Omalos, N – Niato, I – Impros, G – Gerakari, R – Rouvas, V – Viannou, K – Katharo, T – Thripti. Number of trees sampled per site (*n*) is also given. Species recorded for the first time in Greece are in bold, and those recorded for the first time in Crete are marked with *. (*) = species possibly recorded for the first time in Crete but treat with caution due to the uncertainty of their determination or the possible misidentification of previous Cretan records.

Species	Morph.	Distribution							
		Site	O	N	I	G	R	V	K
	<i>n</i>	6	4	7	4	2	4	3	6
<i>Amandinea punctata</i> (Hoffm.) Coppins & Scheid.	Cr	+	–	+	+	+	+	+	+
<i>Anaptychia ciliaris</i> (L.) Flot.	Fr	+	+	+	+	+	+	+	–
*Anisomeridium polypori (Ellis & Everh.) M. E. Barr	Cr	–	–	+	–	–	–	–	–
<i>Athallia cerinella</i> (Nyl.) Arup <i>et al.</i>	Cr	+	+	+	–	–	+	+	+
<i>A. pyracea</i> (Ach.) Arup <i>et al.</i>	Cr	+	+	+	+	–	+	+	+
<i>Blastenia ferruginea</i> (Huds.) A. Massal.	Cr	+	+	+	+	–	+	–	+
*Candelaria concolor (Dicks.) Stein	Fo	+	+	+	–	–	–	–	–
<i>Candelariella aurella</i> (Hoffm.) Zahlbr.	Cr	+	–	+	+	–	–	–	–
*C. efflorescens R. C. Harris & W. R. Buck	Cr	–	–	+	–	–	–	–	–
<i>C. xanthostigma</i> (Ach.) Lettau	Cr	+	+	+	–	+	+	–	+
<i>Collema subflaccidum</i> Degel.	Fo	–	–	+	+	–	+	–	–
<i>Diplotomma alboatrum</i> (Hoffm.) Flot.	Cr	–	–	+	–	–	–	–	+
<i>D. pharcidium</i> (Ach.) M. Choisy	Cr	–	+	+	–	–	–	–	+
<i>Glaucomaria carpinea</i> (L.) S. Y. Kondr. <i>et al.</i>	Cr	+	+	+	+	–	–	–	+
*Huneckia pollinii (A. Massal.) S. Y. Kondr. <i>et al.</i>	Cr	–	–	–	–	–	+	–	–
<i>Lecania naegelii</i> (Hepp) Diederich & van den Boom	Cr	+	–	+	–	–	–	+	+
<i>Lecanora argentata</i> (Ach.) Röhl.	Cr	+	+	–	+	–	–	–	+
<i>L. chlarotera</i> Nyl.	Cr	+	+	+	–	+	+	–	+
<i>L. saligna</i> (Schrad.) Zahlbr.	Cr	+	–	–	+	+	+	–	–
<i>Lecidella elaeochroma</i> (Ach.) M. Choisy.	Cr	+	+	+	+	–	+	+	+
<i>Lepra albescens</i> (Huds.) Hafellner	Cr	–	+	+	+	–	–	–	–
(*)Leptogium cf. cochleatum (Dicks.) P. M. Jørg. & P. James	Fo	–	–	–	–	–	+	–	–
<i>Melanohalea exasperata</i> (De Not.) O. Blanco <i>et al.</i>	Fo	–	+	–	–	–	–	–	–
<i>M. laciniatula</i> (Flagey ex H. Olivier) O. Blanco <i>et al.</i>	Fo	–	+	–	–	–	–	–	–
*Ochrolechia androgyna (Hoffm.) Arnold	Cr	–	–	+	–	–	–	–	–
<i>O. arborea</i> (Kreyer) Almb.	Cr	–	–	+	–	–	–	–	–
(*)O. szatalaensis Verseghy	Cr	+	–	–	–	–	–	–	–
<i>Parmelina pastillifera</i> (Harm.) Hale	Fo	+	+	+	+	–	+	–	+
<i>P. tiliacea</i> (Hoffm.) Hale	Fo	–	–	–	+	+	+	+	–
<i>Pertusaria pertusa</i> (L.) Tuck.	Cr	–	–	–	–	+	–	+	+
<i>Phaeophyscia nigricans</i> (Flörke) Moberg	Fo	+	–	+	–	–	–	–	–
<i>P. orbicularis</i> (Neck.) Moberg	Fo	+	–	+	+	+	+	+	–
<i>Physcia adscendens</i> H. Olivier	Fo	+	–	–	–	–	+	–	–
<i>P. aipolia</i> (Ehrh. ex Humb.) Fürnr.	Fo	–	–	+	–	–	–	–	–
<i>P. biziana</i> (A. Massal.) Zahlbr.	Fo	–	–	+	–	–	–	–	–
*P. dubia (Hoffm.) Lettau	Fo	–	+	+	–	–	–	–	–

(Continued)

Table 2. (Continued)

	Site	Distribution							
		O	N	I	G	R	V	K	T
		n	6	4	7	4	2	4	3
<i>P. stellaris</i> (L.) Nyl.	Fo	+	+	+	+	–	+	+	–
<i>P. tenella</i> (Scop.) DC.	Fo	+	+	+	+	–	+	+	+
<i>Physconia distorta</i> (With.) J. R. Laundon	Fo	+	–	+	+	+	+	+	–
* <i>P. enteroxantha</i> (Nyl.) Poelt	Fo	–	–	–	–	–	+	–	–
<i>P. grisea</i> (Lam.) Poelt	Fo	+	–	+	+	+	+	–	–
<i>P. perisidiosa</i> (Erichsen) Moberg	Fo	–	–	+	+	+	–	+	–
<i>P. subpulverulenta</i> (Szatala) Poelt	Fo	–	–	+	–	+	+	+	–
<i>P. venusta</i> (Ach.) Poelt	Fo	+	+	+	+	–	–	+	–
<i>Pleurosticta acetabulum</i> (Neck.) Elix & Lumbsch	Fo	+	+	+	+	+	+	+	+
* <i>Polycauliona polycarpa</i> (Hoffm.) Frödén <i>et al.</i>	Fo	–	–	–	–	–	–	–	+
<i>Polyozosia albescens</i> (Hoffm.) S. Y. Kondr. <i>et al.</i>	Cr	+	–	+	+	–	+	–	–
<i>P. dispersa</i> (Pers.) S. Y. Kondr. <i>et al.</i>	Cr	+	–	–	–	–	–	+	–
<i>P. hagenii</i> (Ach.) S. Y. Kondr. <i>et al.</i>	Cr	+	–	+	–	+	–	+	+
* <i>P. populicola</i> (DC.) S. Y. Kondr. <i>et al.</i>	Cr	–	–	–	+	–	–	–	–
<i>P. semipallida</i> (H. Magn.) Kondr. <i>et al.</i>	Cr	+	–	–	–	–	–	–	–
<i>Pseudevernia furfuracea</i> (L.) Zopf	Fr	+	–	–	–	–	–	–	–
<i>Ramalina farinacea</i> (L.) Ach.	Fr	–	+	+	+	–	–	+	+
<i>R. fastigiata</i> (Pers.) Ach.	Fr	–	–	+	+	–	–	–	+
<i>R. fraxinea</i> (L.) Ach.	Fr	+	+	–	–	–	+	+	+
<i>Rinodina pyrina</i> (Ach.) Arnold	Cr	+	+	+	+	–	+	+	+
<i>R. sophodes</i> (Ach.) A. Massal.	Cr	–	+	–	–	–	–	–	+
* <i>Scoliosporum chlorococcum</i> (Graewe ex Stenh.) Vězda	Cr	–	+	–	–	–	–	–	–
<i>Tephromela atra</i> (Huds.) Hafellner	Cr	–	+	–	–	–	–	+	–
<i>Xanthoria parietina</i> (L.) Th. Fr.	Fo	+	+	+	+	+	+	+	+

foliose, one was fruticose while the remaining four were crustose. Crustose lichens dominated in Omalos, Niato, Impros and Thriпти, foliose lichens dominated in Rouvas and Viannou, and both co-occurred in Gerakari and Katharo. Fruticose lichens were always in the minority (Table 4). Half of the recorded bryophyte species were acrocarpous, the other half were pleurocarpous but with local disparities. A majority of pleurocarpous species were found in Niato and Gerakari, while acrocarpous species dominated in Katharo and no pleurocarpous species were found in Omalos. In Impros, both co-occurred (Table 4).

Influence of environmental variables on the epiphytic communities of *Zelkova abelicea*

The permutation tests for the distance-based redundancy analysis (see Supplementary Material Table S2, available online) showed that among the selected environmental variables, longitude, topography and browsing intensity were significant ($P < 0.05$) with regard to epiphytic composition, while altitude was not significant ($P = 0.21$) and was thus excluded from further analyses. Figure 6 shows the results of the distance-based redundancy analysis of

epiphytic lichen and bryophyte communities on *Z. abelicea*. Several clusters of trees stand out. A first group includes all trees from Thriпти. A second group includes all trees from Niato. A third group consists of five trees from Impros and one tree from Gerakari. A fourth group is composed of all individuals from Rouvas and one tree each from Viannou and Katharo. The remaining trees, and all those from Omalos, are grouped between these four clusters.

Ecological indicator values

EIVs of lichens for the eight study sites are shown in Fig. 7 and Supplementary Material Table S3 (available online). Significant, or close to significant ($P < 0.1$), differences among study sites exist for the following indicators: pH of substratum ($\chi^2 = 18.971$, $df = 7$, $P = 0.008$), aridity ($\chi^2 = 12.7$, $df = 7$, $P = 0.08$) and eutrophication ($\chi^2 = 20.743$, $df = 7$, $P = 0.004$).

The lichen biota living on *Z. abelicea* showed a wide range of bark pH preferences (Fig. 7A), with species tolerating very acid substrata (value 1) to species preferring basic substrata (value 5), although the most frequently distributed lichen biota showed

Table 3. List of epiphytic bryophyte species recorded on *Zelkova abelicea* with their distribution at sample sites in Crete. The nomenclature follows Ros-Espin et al. (2013) and the morphology follows Preston (1984) and Düll (1979). Morph. = morphological type; P – pleurocarpous, A – acrocarpous. Study sites (Site) are listed following a longitudinal gradient from the west to the east of Crete: O – Omalos, N – Niato, I – Impros, G – Gerakari, R – Rouvas, V – Viannou, K – Katharo, T – Thripti. Number of trees sampled per site (*n*) is also given.

Species	Morph.	Distribution							
		O	N	I	G	R	V	K	T
	Site	O	N	I	G	R	V	K	T
	<i>n</i>	6	4	7	4	2	4	3	6
<i>Habrodon perpusillus</i> (De Not.) Lindb.	P	–	–	–	+	–	–	–	–
<i>Homalothecium sericeum</i> (Hedw.) Schimp	P	–	+	–	+	–	–	+	–
<i>Leptodon smithii</i> (Hedw.) F. Weber & D. Mohr.	P	–	–	–	+	–	–	–	–
<i>Leucodon sciuroides</i> (Hedw.) Schwägr.	P	–	+	+	+	–	–	–	–
<i>Nogopterium gracile</i> (Hedw.) Crosby & W. R. Buck	P	–	+	–	+	–	–	–	–
<i>Orthotrichum affine</i> Schrad.	A	+	–	–	+	–	–	+	–
<i>O. lyellii</i> Hook & Tayl.	A	+	–	–	+	–	–	+	–
<i>O. rupestre</i> Schleich.	A	+	+	+	–	–	–	–	–
<i>Syntrichia laevipila</i> Brid.	A	+	–	–	–	–	–	–	–
<i>S. virescens</i> (De Not.) Ochyra	A	–	–	–	+	–	–	–	–

preferences for acid to slightly basic bark conditions (values 2–4). No species linked to very shaded conditions (value 1) were found, and only one species restricted exclusively to shaded sites (value 2; *Anisomeridium polypori*) was found on one tree from Impros (Fig. 7B). All other species are light demanding species and occur in sites with diffuse light (value 3), sun exposed sites (value 4) or with very high direct solar irradiation (value 5). The majority and most frequent species are mesophytic to xerophytic species in terms of air humidity (Fig. 7C). Only two species are indicators of relatively hygrophytic conditions (value 1; *Ramalina farinacea* and *Tephromela atra*), while three species are tolerant to very arid conditions (values 4 or 5 only; *Diplotomma albostratum*, *Diplotomma pharcidium* and *Polyozosia dispersa*). The most frequently occurring lichens were adapted to weak to high eutrophication (values 2–4; Fig. 7D). Only two species are strict indicators of no eutrophication (value 1; *Ochrolechia androgyna* and *Ochrolechia szatalaensis*), found only on three trees from Impros and one from Omalos, while six species are strict indicators of high eutrophication (values 4 or 5 only; *Candelariella efflorescens*, *Phaeophyscia nigricans*, *P. orbicularis*, *Physcia dubia*, *Physconia grisea* and *Polyozosia semipallida*). The most frequently recorded lichens have a wide poleotolerance scale (values 1–3) and tolerate anthropogenic disturbance (Fig. 7E). Species indicating low or null human disturbance were often found only on single trees. Only one species found on one tree in Viannou is indicative of old trees growing in ancient, undisturbed forest stands (value 0; *Leptogium* cf. *cochleatum*), while 10 species are strict indicators of natural or semi-natural habitats with low disturbance (value 1; *Anisomeridium polypore*, *Candelariella efflorescens*, *Huneckia pollinii*, *Melanohalea laciniatula*, *Ochrolechia androgyna*, *O. szatalaensis*, *Physconia venusta*, *Polyozosia populicola*, *P. semipallida* and *Ramalina fraxinea*).

EIVs for mosses for the five study sites in which mosses are present are shown in Fig. 8 and Supplementary Material Table S4 (available online). None of the differences among study sites were significant for the different EIVs. The moss

species present on *Z. abelicea* are mainly light-tolerant species (value 8), although one half-shade species (value 5; *Nogopterium gracile*) and two intermediate (values 6 & 7; *Habrodon perpusillus* and *Orthotrichum lyellii*) were also present. Both Niato and Gerakari have, in addition to light-tolerant mosses, species that prefer more shaded conditions (values 5 & 6) and which were not found elsewhere. The temperature tolerance range of mosses growing on *Z. abelicea* was rather wide but most species were indicative of moderately warm conditions (values 4 & 5), with only two species indicative of rather cool conditions (values 2 & 3; *Homalothecium sericeum* and *Orthotrichum rupestre*) and two species tolerating hot to extremely hot temperatures (value 8; *Habrodon perpusillus* and *Leptodon smithii*). Gerakari was the only site in which species tolerating hot temperatures (value 8) were found, while also hosting at the same time cool and intermediate species. For continentality, all species show values between oceanic to subcontinental (values 3–5). However, species with value 3 were found only in Gerakari. Regarding humidity, species are indicative of arid conditions (values 2 & 3) to humid (values 4 & 5) but not wet conditions. The species with the highest value (5; *Habrodon perpusillus*) was found only in Gerakari, but this latter site also hosted the full range of values. As for pH of substratum, species are indicative of moderately acidic substrata (value 5) to weakly acidic to weakly basic (value 7) substrata.

Discussion

Diversity and distribution of epiphytic lichens and bryophytes

The diversity of epiphytic lichens and bryophytes growing on *Zelkova abelicea* was investigated in this study for the first time, and over the whole distribution range of the phorophyte tree species.

Our study revealed that the diversity of epiphytic lichens and bryophytes growing on *Z. abelicea* was rather high, with a total

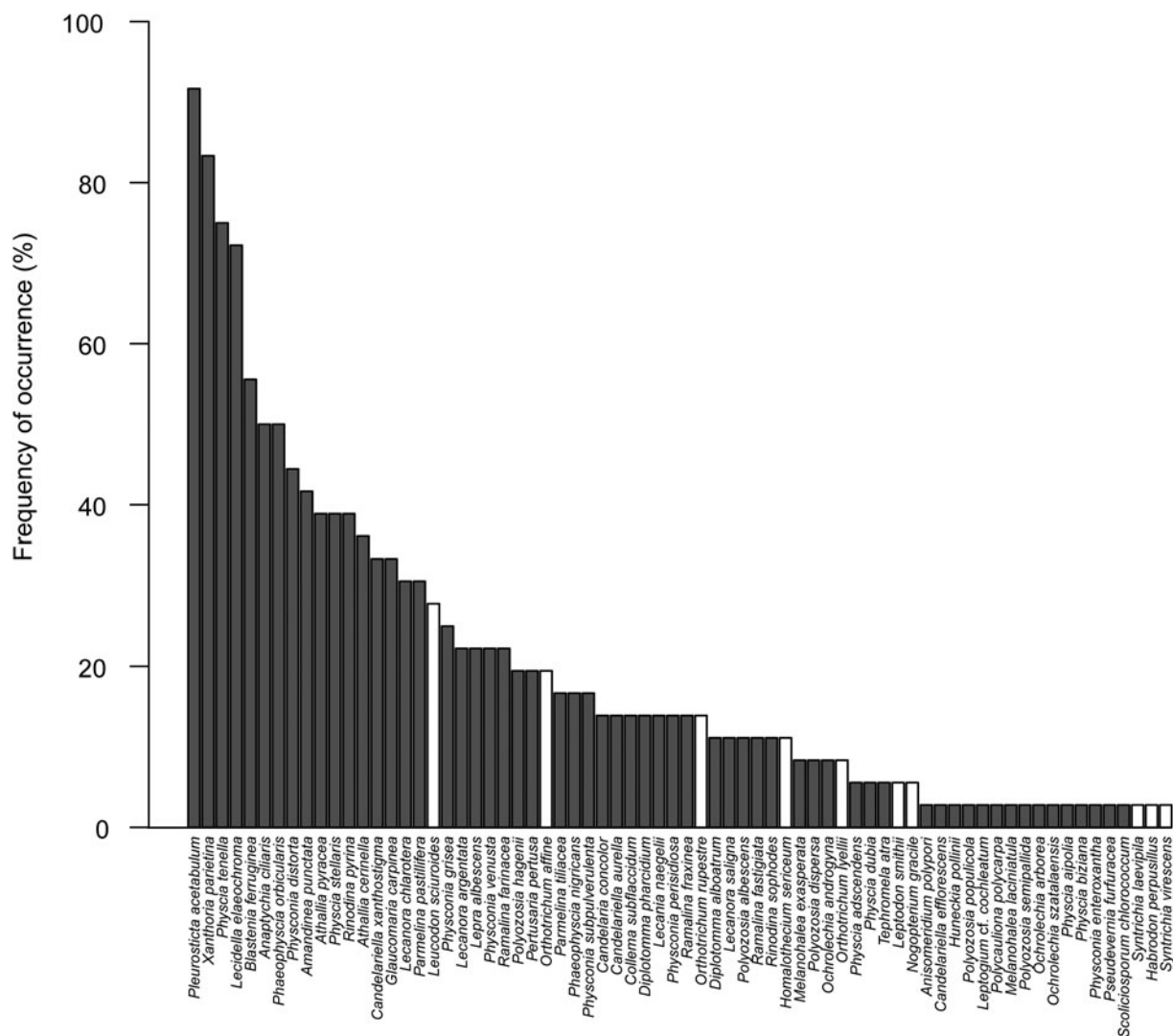


Fig. 3. Frequency of occurrence (%) of epiphytic lichens (dark grey) and bryophytes (white) growing on the investigated *Zelkova abelicea* trees on Crete.

of 70 species recorded (60 lichen and 10 bryophyte species). Individual records included up to 20 lichen and four bryophyte species per tree. All previous studies focusing on or including epiphytic lichens or bryophytes of other Cretan phorophytes reported lower species numbers (e.g. Gradstein 1971; Spribille *et al.* 2006; Christensen 2007, 2014; Vondrák *et al.* 2008). However, higher or equivalent species counts are known from several phorophytes in other areas of the Mediterranean (e.g. Zedda & Sipman 2001; Aragón *et al.* 2004). This suggests that insufficient attention has been given to Cretan epiphytes and that probably more species are still to be recorded after further in-depth sampling. Indeed, the discovery of 10 lichen species previously unrecorded for Crete, of which three are also new for the whole Greek territory, shows how little is known about the epiphytic biodiversity of phorophytes on Crete, as already emphasized by Christensen (2007, 2014). However, the present study did not reveal any epiphyte taxa exclusively restricted to *Z. abelicea* and most of the epiphytes recorded in this study are also encountered on other phorophyte species in Greece or the Mediterranean (Ros-Espin *et al.* 2013; Arcadia 2022).

The three newly reported species for Greece (*Anisomeridium polypori*, *Candelariella efflorescens* and *Polycaulonia polycarpa*)

are all species that are found in other nearby countries of the Mediterranean (see e.g. Yazici & Aptroot 2008; Bilovitz *et al.* 2010; Yavuz & Çobanoğlu 2018; John *et al.* 2020; Nimis & Martellos 2021), and therefore their presence in Greece is not surprising. Two other potentially new species for Crete, *Leptogium* cf. *cochleatum* and *Ochrolechia szatalaensis*, were recorded. The identity of the former is uncertain, whereas *O. szatalaensis* was considered by Kukwa (2011) to be a synonym of *O. macrospora* Vers., a species that was previously recorded from Crete by Christensen & Svane (2007). However, their specimen was reported as having large spores (68–100 µm) whereas the specimen we examined had spores that were smaller, less than 60 µm, which is typical for *O. szatalaensis*. The chemical reactions of our specimen were consistent with the diagnosis of *O. szatalaensis* reported by Kukwa (2011). Therefore, we believe that the *O. macrospora* specimen of Christensen & Svane (2007) may belong to another taxon, and that our specimen is the first record of *O. szatalaensis* for Crete, but further investigations are needed to clarify this.

Lichen and bryophyte richness is influenced by a multitude of factors which are often difficult to disentangle, such as precipitation, temperature, light, air humidity, water availability,

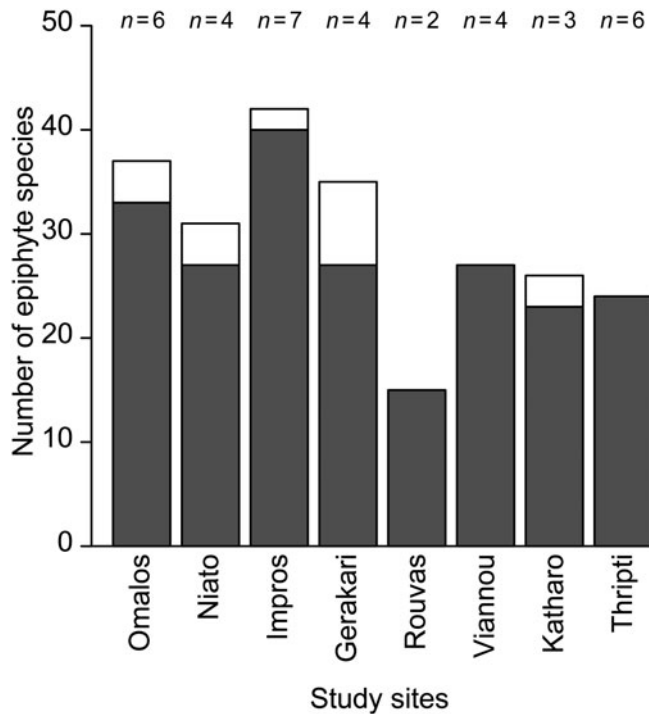


Fig. 4. Diversity of epiphytic lichen (dark grey) and bryophyte (white) species of sampled *Zelkova abelicea* trees for each of the eight study sites on Crete. n = number of trees sampled per site.

substratum characteristics, land-use and landscape history, stand structure and size, phorophyte species and surrounding vegetation (Nascimbene *et al.* 2009; Pinho *et al.* 2012; Aranda *et al.* 2014; Medina *et al.* 2014; Cardós *et al.* 2016; Henriques *et al.* 2016). Extensive pasturelands have been found to have high lichen biodiversity because of the simultaneous presence of sensitive species which would disappear in more eutrophicated sites, and of nitrophytic species associated with locally higher atmospheric ammonia due to the activity of grazing animals (Šliwa 2006; Pinho *et al.* 2012). Tree age is known to be an important factor in sustaining lichen and bryophyte biodiversity since epiphytes have had more time to establish on older trees and/or because of age-dependent changes in bark qualities (Johansson *et al.* 2007; Ranius *et al.* 2008; Fritz *et al.* 2009; Lie *et al.* 2009; Nascimbene *et al.* 2009; Király *et al.* 2013). A study of the demographic structure of *Z. abelicea* populations showed that not only arborescent trees but also dwarfed individuals can be several centuries old (Fazan *et al.* 2012), and thus dwarfed individuals may act as important, but often overlooked, phorophytes.

There were also spatial patterns of richness. *Zelkova abelicea* of the Levka Ori mountain range show the highest diversity of epiphytes since 53 out of 60 species of lichen and 7 out of 10 species of bryophyte were found there. However, this may be expected since the highest number of trees (17 trees, i.e. 47% of the total), including both arborescent and dwarfed individuals, was sampled there. This mountain range (with its suitable climatic conditions; Goedecke & Bergmeier 2018) hosts the most developed and abundant number of *Z. abelicea* stands (Kozłowski *et al.* 2014) and Cardós *et al.* (2016) has found that well-developed and large tree stands tend to have higher lichen and bryophyte diversity than small, fragmented or isolated tree patches. Furthermore, in the Levka Ori, a higher lichen diversity than elsewhere was found on individual trees, with up to 20

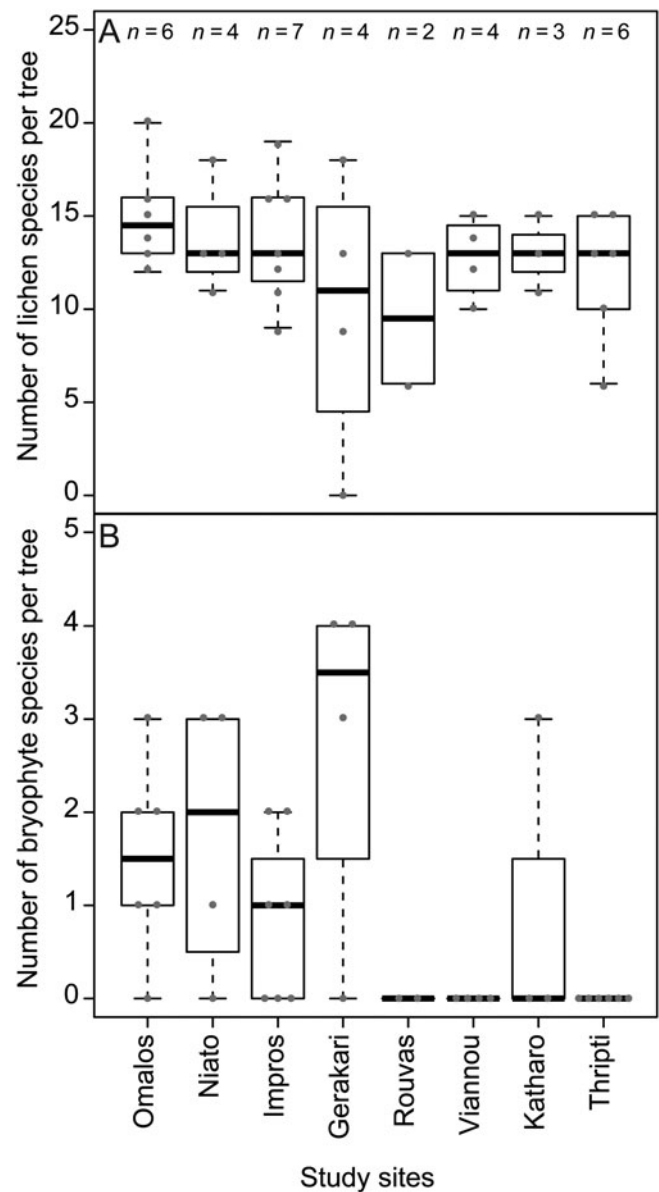


Fig. 5. Boxplots of the number of lichen (A) and bryophyte (B) species found on *Zelkova abelicea* trees in each of the eight study sites on Crete. n = number of trees per site. Grey dots represent individual trees. The midlines of the boxplots show the median, the boxes show the 1st and 3rd quartiles and the whiskers extend up to 1.5 times the interquartile range.

species per tree (Fig. 5). There are no previous comparisons of epiphytic flora between mountain ranges of Crete. However, Christensen (2014) found a higher diversity of lichens on *Platanus orientalis* L. in western Crete compared to trees situated in central Crete, which he attributed to the higher precipitation occurring in western Crete compared to more eastern sites, and in some cases also differences in land-use practices. The Levka Ori is the highest rainfall area of the island (Varouchakis *et al.* 2018; Agou *et al.* 2019) and an increased lichen diversity due to a positive correlation with precipitation has also been noticed by other researchers (e.g. Giordani 2006; Svoboda *et al.* 2010).

With regard to the bryophyte flora, Gerakari on Mt Kedros appears to be the most suitable place in our study and contained by far the highest diversity of bryophytes, with eight out of 10 species recorded there, as well as the highest number of bryophytes

Table 4. Proportion in percentage of lichens and bryophytes recorded on Cretan *Zelkova abelicea* trees per site. The number of epiphytes per site is given in brackets. Thallus morph. = proportion of lichens based on the morphological form of their thallus (Cr – crustose, Fo – foliose, Fr – fruticose). Morph. = proportion of bryophytes based on their morphology (P – pleurocarpous, A – acrocarpous).

Mountain	Site	Overall (%)		Lichens (%)			Bryophytes (%)	
		Epiphytes		Thallus morph.			Morph.	
		Lichens	Bryophytes	Cr	Fo	Fr	P	A
Levka Ori	Omalos	89 (33)	11 (4)	55	36	9	0	100
	Niatio	87 (27)	13 (4)	52	37	11	75	25
	Impros	95 (40)	5 (2)	50	42.5	7.5	50	50
Kedros	Gerakari	77 (27)	23 (8)	44.5	44.5	11	62.5	37.5
Psiloritis	Rouvas	100 (15)	0	40	53	7	-	-
Dikti	Viannou	100 (27)	0	41	52	7	-	-
	Katharo	88 (23)	12 (3)	43.5	43.5	13	33	67
Thripti	Thripti	100 (24)	0	66.5	21	12.5	-	-

per tree. On Mt Kedros, the sampling site is located in an open forest on a steep and shaded north-facing slope at the foot of a cliff. This site has a relatively high precipitation and high potential run-off or percolation (Goedecke & Bergmeier 2018) and had the lowest heat load value (following McCune & Keon 2002) of all analyzed *Z. abelicea* sites, conditions that seem to be favourable to the development of a rich moss community.

The lowest epiphytic diversity (only 15 species of lichen and no bryophytes) was found at Rouvas on Mt Psiloritis, although this is also the site in which the lowest number of trees ($n = 2$) was sampled. Some areas of Mt Psiloritis have been previously found to have a low number of endemic vascular species due to a supposedly stronger human impact on the vegetation there than elsewhere (Legakis & Kyriotakis 1994). This strong anthropogenic impact coupled with locally adverse microclimatic conditions could account for the low epiphytic diversity recorded for this area.

Only mosses and no liverworts were found during our study. This almost certainly reflects the more pronounced drought intolerance of most epiphytic liverworts (Bischler 2004). Three of the four most frequently recorded bryophyte species have a widespread distribution in temperate Europe (Düll 1984, 1985). The largest areas on the trunks of *Z. abelicea* were occupied by *Leucodon sciuroides* which was also the most frequently recorded species. Several of the less frequently recorded bryophytes are oceanic or sub-oceanic species (Düll 1984, 1985) and occur throughout the Mediterranean basin (Ros-Espin *et al.* 2013). The majority of bryophytes growing on the trunk of *Z. abelicea* trees are light-loving species (Düll 1991) and are not found in densely forested areas.

Bryophytes did not occur at all in three sites (Rouvas, Viannou, Thripti), all situated in central or eastern Crete, whereas all sites in western Crete recorded bryophytes. With the exception of Katharo, all sampled trees east of Mt Kedros hosted no bryophytes. As suggested for the lichen flora, Gradstein (1971) evokes the west-east decreasing gradient in precipitation as a major factor influencing the distribution of bryophytes in Crete, although in his study some bryophytes were found uniquely in the central or eastern Cretan mountains. This explanation seems to be verified by our study. It is possible that the three sites without epiphytic bryophytes present environmental conditions that are not suitable for their growth, although further field investigations

and more in-depth sampling should be undertaken to confirm this finding. Katharo stands out amongst the other eastern sites because the sampled trees were located on the border of a cultivated plateau, and thus epiphytic bryophytes there could possibly benefit from agricultural activities or moisture due to irrigation.

Factors influencing the species composition of epiphytic communities on *Zelkova abelicea*

The permutation tests for the db-RDA showed that longitude, topography and browsing pressure were significant in differentiating epiphytic communities whereas altitude was not. The db-RDA showed that the three sites of Impros, Niatio and Thripti were clearly distinguished in terms of composition of epiphytic community. Moreover, Rouvas with the addition of one tree from Viannou and one from Katharo were also differentiated.

Altitude was not significant in influencing species composition of the epiphytic community, despite the fact that it is known, alongside precipitation, to be a major factor influencing species composition in the Mediterranean (see e.g. Loppi *et al.* 1997; Mucina *et al.* 2000; Matos *et al.* 2014; Medina *et al.* 2014; Vieira *et al.* 2016; Sevgi *et al.* 2019). This is probably because all investigated sites were situated within a narrow altitudinal range (i.e. only 170 m between the highest and lowest sites). Furthermore, longitude, or geographical position on Crete, is highly reflective of precipitation patterns, with a general west to east decreasing trend (Varouchakis *et al.* 2018; Agou *et al.* 2019), although small-scale climatic conditions such as orographic effects, cloud and dew accumulation and snow cover (see Goedecke & Bergmeier 2018) also probably play an important role. Niatio and Impros have completely different precipitation patterns despite being geographically close (Fig. 1). Niatio is located on the windward side of the Levka Ori, in a doline surrounded by mountains where pockets of fog may persist and in an area which receives abundant levels of rainfall. Impros is on the dry leeward southern side of the same mountain range, on a slope overlooking the Libyan Sea. The importance of nocturnal dew or humidity rising from the sea is unknown for all sites and might be an important and overlooked factor that explains the compositional differences between these nearby sites. Indeed, the lichen community of Impros, although showing a wide

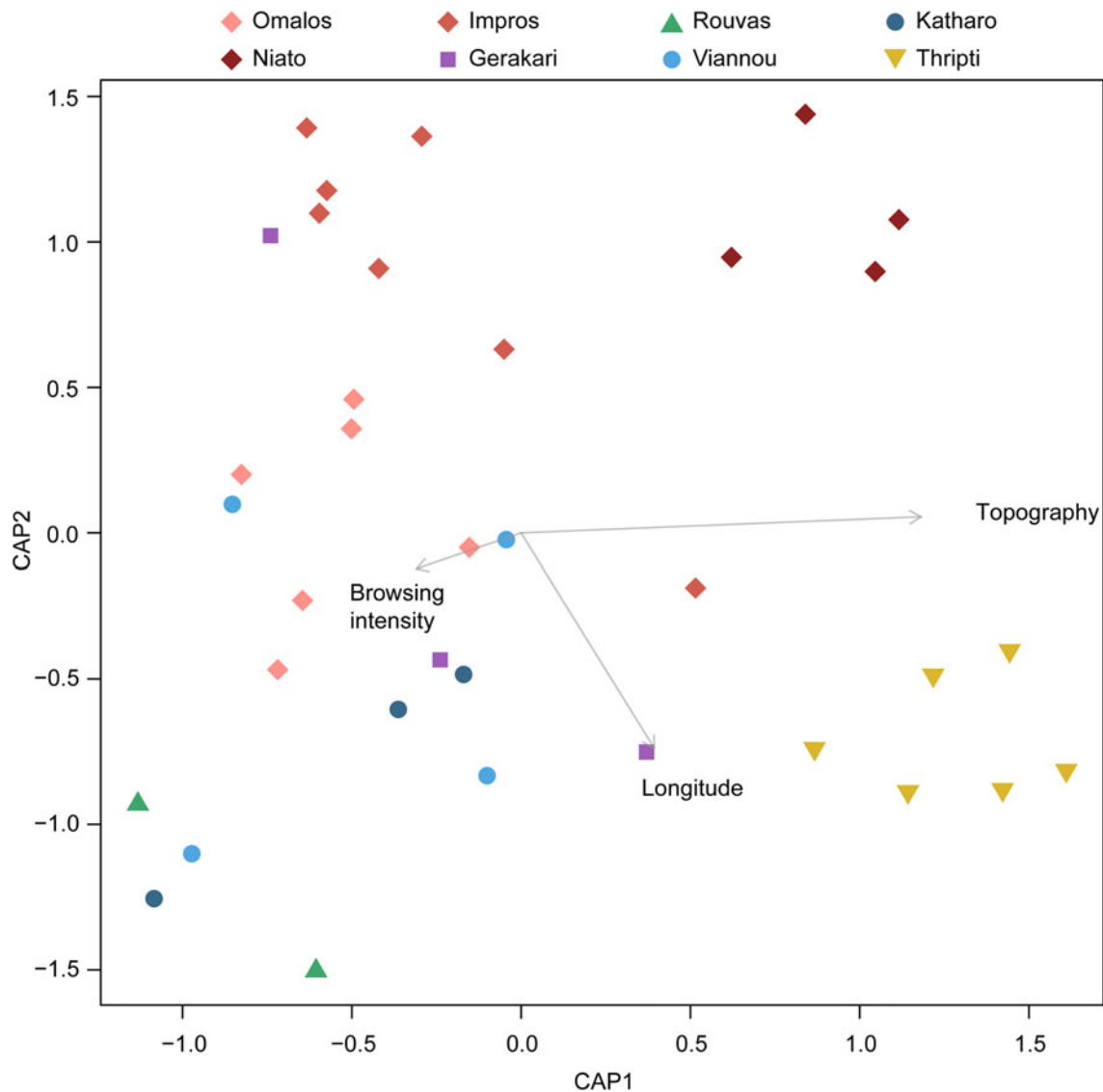


Fig. 6. Ordination plot of the distance-based redundancy analysis of epiphytic lichen and bryophyte communities on *Zelkova abelicea* trees on Crete. Each symbol represents the community found on a single *Z. abelicea* tree. Each mountain range is represented by a different shape (◆ Levka Ori, ■ Mt Kedros, ▲ Mt Psiloritis, ● Dikti Mts, ▼ Thripti Mts) and each study site by a different colour. Significant environmental variables are fitted (represented by arrows). Arrow lengths are proportional to the significance of the variables in the permutation test.

range of EIVs, includes several lichen taxa that are highly sensitive to air humidity and solar irradiation (Fig. 7 and see below).

Local effects such as topography (i.e. slope or doline) may also play an important role in community composition. Niato and Thripti are the only two sampling sites situated on a flat mountain doline and not on a slope. However, coincidentally, these two sites were the only two places visited during the study where no arborescent trees were found, and thus only dwarfed shrubby *Z. abelicea* individuals were sampled. As a result, we cannot disentangle the influence of topography from that of tree morphology here. However, dolines have different pedological conditions (e.g. deeper soils, different soil pH and nutrient content) than sloped areas (Egli 1993) and dwarfed individuals have a different architecture than arborescent trees; the former may host epiphytic lichens and bryophytes found necessarily closer to the ground and living under different microclimatic and biotic (e.g. browsing) influences. Dwarfed trees or otherwise low-growing shrubs seem to have been often overlooked in previous studies. Here, neither

Niato nor Thripti showed lower epiphytic species numbers compared to other sites where arborescent trees were sampled. This is particularly true for Niato where 31 lichen species and four bryophyte species were found, showing a relatively high overall diversity. These results underline the importance of dwarfed, overbrowsed individuals as refugia for epiphytic floras. This is consistent with the results of Spribille *et al.* (2006) who found species-rich epiphytic lichen communities on trees in overbrowsed and dwarfed communities, and of Grube *et al.* (2001) who state that thorny cushion plants provide interesting microhabitats for epiphytic lichens. Moreover, Pirintsos *et al.* (1998) showed that lichen community composition in overbrowsed dwarfed shrublands was influenced mainly by shrub height and shrub density (i.e. gaps between shrubs) which influence microclimatic conditions for lichen growth, but also depended on the phorophyte species present. Furthermore, epiphytic lichen communities have been found to change depending on the height at which they grew on the trunk (e.g. Pirintsos *et al.* 1993;

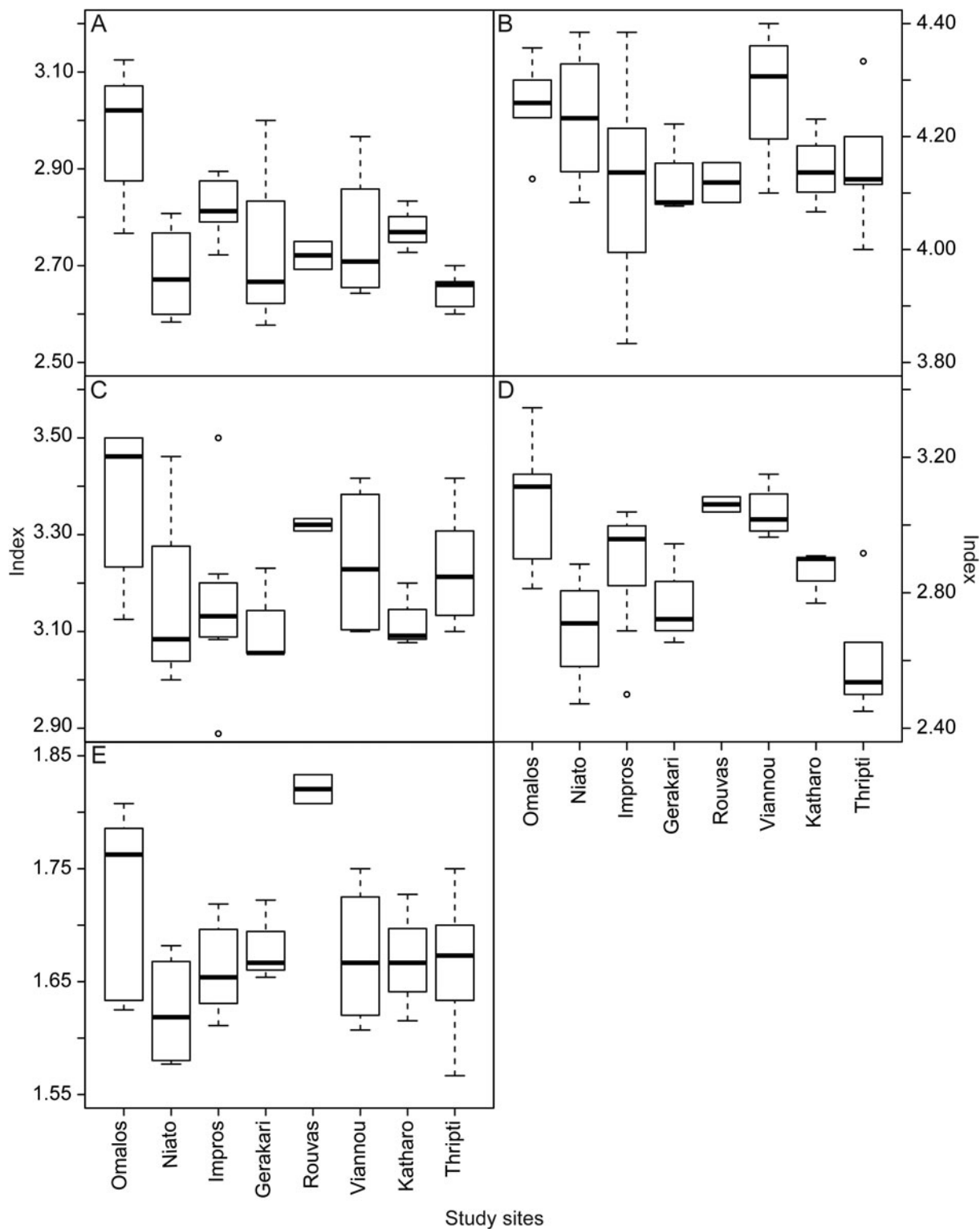


Fig. 7. Ecological indicator values for lichens recorded on *Zelkova abelicea* trees at different study sites on Crete following Nimis (2016) and Nimis & Martellos (2021). Detailed information is found in these publications and Supplementary Material Table S3 (available online). Only the observed values are described here. A, pH of substratum; 2 = acid substrata, 3 = subacid to subneutral substrata, 4 = slightly basic substrata. B, solar irradiation; 3 = in sites with plenty of diffuse light but scarce direct solar irradiation, 4 = in sun-exposed sites without extreme solar irradiation, 5 = in sites with very high direct solar irradiation. C, aridity (air humidity); 2 = rather hygrophytic, intermediate between 1 and 3, 3 = mesophytic, 4 = xerophytic but absent from extremely arid stands. D, eutrophication (including deposition of dust and nitrogen compounds); 2 = resistant to very weak eutrophication, 3 = resistant to weak eutrophication, 4 = occurring in rather highly eutrophicated situations. E, poletolerance (i.e. tolerance to human disturbance); 1 = species occurring in natural or semi-natural habitats, 2 = species occurring in moderately disturbed areas (e.g. agricultural areas, small settlements, etc.). The midlines of the boxplots show the median, the boxes show the 1st and 3rd quartiles and the whiskers extend up to 1.5 times the interquartile range while values exceeding this threshold are plotted as open circles.

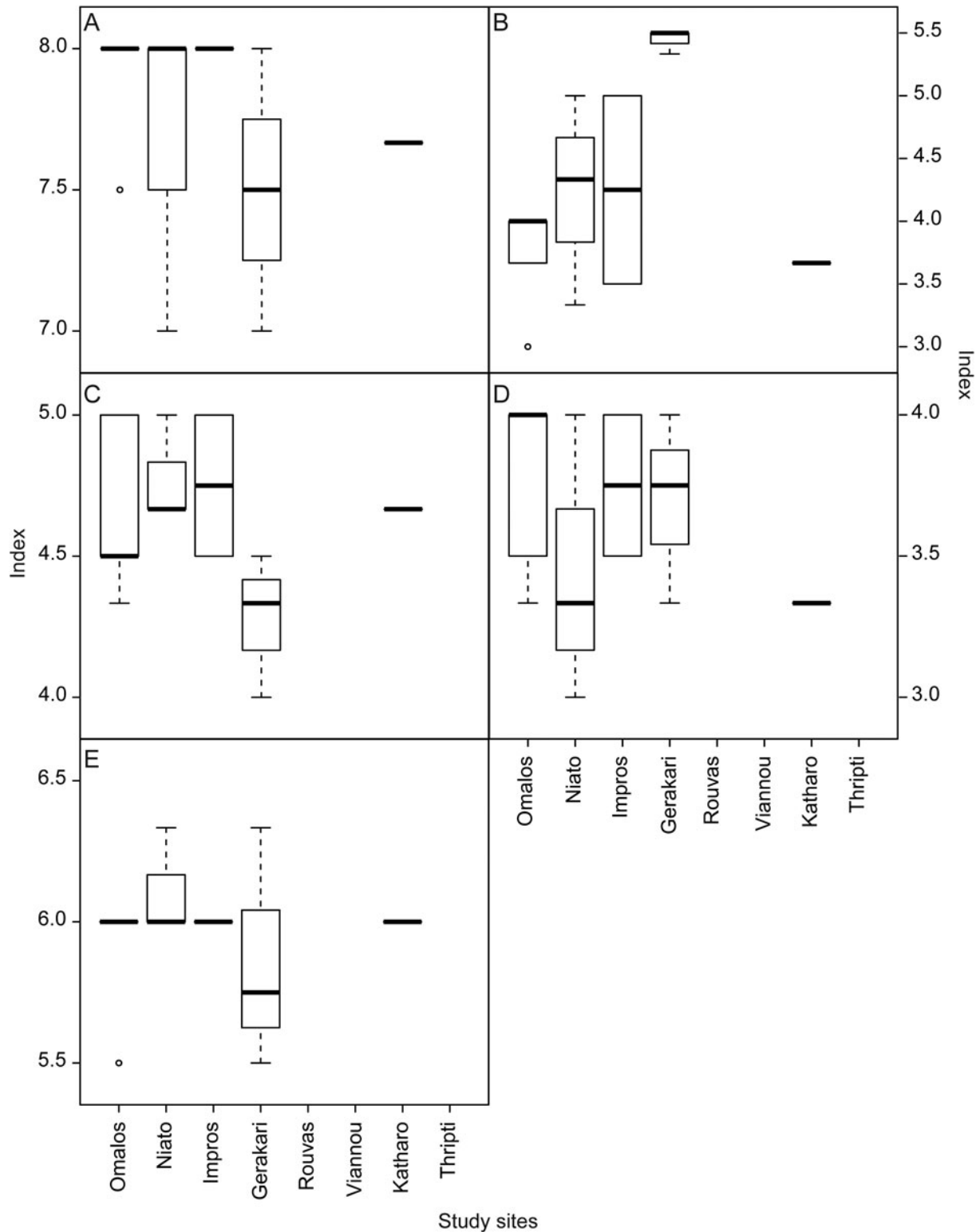


Fig. 8. Ecological indicator values for mosses recorded on *Zelkova abelicea* trees at different study sites on Crete following Düll (1991). Detailed information can be found in that publication and Supplementary Material Table S4 (available online). Only the observed values are described here. A, light; 5 = half-shade, 6 = between 5 and 7, 7 = half-light, 8 = light. B, temperature; 1 = cold, 2 = between 1 and 3, 3 = cool, 4 = between 3 and 5, 5 = moderately warm, 6 = between 5 and 7, 7 = warm. C, continentality; 2 = oceanic, 3 = between 2 and 4, 4 = suboceanic, 5 = intermediate. D, humidity; 1 = strongly arid, 2 = between 1 and 3, 3 = arid, 4 = between 3 and 5, 5 = humid. E, pH of substratum; 5 = moderately acidic, 6 = between 5 and 7, 7 = weakly acidic to weakly basic. The midlines of the boxplots show the median, the boxes show the 1st and 3rd quartiles and the whiskers extend up to 1.5 times the interquartile range while values exceeding this threshold are plotted as open circles.

Asplund *et al.* 2014). Epiphytic communities living on dwarfed *Z. abelicea* individuals may benefit from microclimatic conditions linked with this specific tree morphology and which are probably different to those of arborescent trees. Despite their small size, dwarfed *Z. abelicea* individuals were also found to be in some cases older than arborescent trees (Fazan *et al.* 2012), and old trees are known to have more developed and more species-rich epiphyte communities (Nascimbene *et al.* 2010). This could be explained by the fact that they offer more diverse microhabitats (Nordén *et al.* 2018), provide more time for the colonization and establishment of species-rich communities or possess different substratum qualities (Lie *et al.* 2009). Nevertheless, our study contains a bias, since epiphytes were collected only from the trunk on arborescent trees and not from the canopy, while being collected from both the trunk and canopy of dwarfed individuals. Trunk and canopy epiphytic communities have been shown to be quite different in many cases (e.g. McCune *et al.* 2000; Ellis 2012; Maceda-Veiga & Gómez-Bolea 2017), and therefore further sampling should be undertaken to assess if this could also be the case for *Z. abelicea* and whether this could lead to different results than those presented here.

Ecological indicator values

Since no database including Greece has been compiled so far, the EIVs used in this study were those compiled for Italy (lichens) and Central Europe (mosses). Some authors have successfully used EIVs for vascular plants outside of their original range (e.g. Körner *et al.* 1997). In addition, Christensen (2014) argues that, at least for lichens, the Italian database can also be used in a Greek context. However, other authors (e.g. Godefroid & Dana 2006) have shown differences in EIVs for vascular plants between Mediterranean countries, and this is important to keep in mind when interpreting the data presented in this paper.

Significant differences in lichen assemblages in terms of bark pH, air humidity and eutrophication were recorded among sites. These differences are most probably related to variations in intensity of pastoral activities. Indeed, an increased presence of browsing animals will trigger a rise in eutrophication levels through higher deposition of nitrogen which in turn will raise bark pH. Bark pH is known to be an important factor in determining epiphytic lichen composition (van Herk 2001) and will increase through the emission of ammonia (NH₃) as a result of practices such as animal husbandry (Paoli *et al.* 2010), but also due to dust deposition and dry conditions (Loppi & De Dominicis 1996; Loppi *et al.* 1997). However, bark pH also depends on phorophyte species, tree age, position of epiphytes on the tree and soil type (Kermit & Gauslaa 2001). Paoli *et al.* (2010) state that due to the intense and widespread livestock grazing that occurs throughout Crete, the whole island is affected to some extent by habitat eutrophication through the deposition of nitrogen, but it is clear that local disparities exist among sites. Furthermore, the presence of species tolerant to lower air humidity in some areas may be explained not only by more xeric growth conditions but also by the prevalence of nitrogen-tolerant species, since nitrogen-sensitive species are also often sensitive to air humidity (Hauck & Wirth 2010).

Despite the effects of grazing and localized eutrophication, Pinho *et al.* (2012) found that extensive pasturelands could maintain high lichen species diversity due to the concomitant presence of nitrophilous and non-nitrophilous (sensitive) lichen species. However, the maintenance of the latter, albeit with a decrease in abundance, occurs only up to a certain degree of land use

intensity, after which these species disappear. This phenomenon can be observed, for example, in Omalos where lichen assemblages signal the highest values of bark pH and aridity, rather high values of eutrophication and high values of poleotolerance. This all tends to point toward a strong influence of pastoral activities on the local lichen assemblages, with the predominance of eutrophication- and poleotolerant species. The values of aridity that are higher than elsewhere and the high proportion of nitrogen-tolerant species are probably linked in Omalos. However, the presence of species such as *Ochrolechia szatalaensis*, a strict indicator of no eutrophication, and of several species with low poleotolerance or low to medium aridity tolerance demonstrates that sensitive species can still be maintained locally, and possibly thrive in Cretan *Z. abelicea* stands.

No significant differences were found between sites when considering the EIVs of mosses, but most sites contained only a small number of species, from which it is difficult to extract conclusions. Nevertheless, compared to the other study sites, Gerakari showed a moss community that included, besides generalists, more shade-tolerant species, oceanic species and species tolerating less arid conditions. Although these features could be a sampling artefact since Gerakari also hosts the highest number of moss species (8 out of 10 species), it is probably reflective of local site conditions. Indeed, Gerakari also hosts lichen species indicative of higher air humidity in comparison with the rest of the study sites. These findings are probably due to the fact that the site is situated on a shaded north-facing slope at the foot of a cliff. Goedecke & Bergmeier (2018) previously stated that the site had the lowest heat load value of all analyzed *Z. abelicea* sites.

The sites of Niato, Thripti and to a lesser extent Impros have some particularities in terms of lichen EIVs and confirm the db-RDA results (Fig. 6). Niato and Thripti show lower values of bark pH and eutrophication. In addition, Niato has a lichen assemblage that is more sensitive to air humidity and human disturbance than Thripti, although the latter also contains lichens that are very sensitive to human disturbance. At Impros, lichen EIVs point towards a wider range of tolerance to solar irradiation compared to all other sites. Both lichens preferring more shaded conditions and lichens tolerant to high solar irradiation are found there. These findings could reflect the dwarfed nature of some of the sampled trees (Niato and Thripti) but could also be an indicator of lower than expected pastoral activities, possibly resulting from the remoteness of the three sites.

Rouvas, on the contrary, seems to have lost its most sensitive lichens. The site is distinguished by the low number of lichen species (only 15 spp.) found there, an absence of bryophytes as well as its levels of poleotolerance that are higher than elsewhere, comparatively high eutrophication level and presence of lichens tolerating high air aridity levels. These results might be explained by a locally sparser forest cover, a more arid environment or, as suggested by Legakis & Kypriotakis (1994), Lyrantzis (1996) and Hostert *et al.* (2003), could be indicative of a stronger disturbance than elsewhere due to locally intensive agropastoral practices or other human activities. In our study, the site of Rouvas seems to be the least favourable site for epiphytic lichens on *Z. abelicea*, although sampling more trees in Rouvas would be needed to confirm this finding.


Conclusions

The diversity and distribution of epiphytic lichens and bryophytes using *Zelkova abelicea* as a phorophyte were studied for the first

time over the whole distribution range of this tree species. The rather high diversity of epiphytes recorded and the number of previously unrecorded species for Greece and Crete alike show how much is still unknown about epiphytes on Crete in general, but also about the epiphytic communities hosted by *Z. abelicea*. Differences in community composition and species diversity between sites was reflective of many differences in local conditions, across scales relating to climate, topography, land use, pastoral activities and tree morphology (dwarfed or arborescent). Our study also highlighted the importance of possibly very old, dwarfed trees as key hosts of specific epiphytic communities. Dwarfed trees were found to have different but equally rich communities as arborescent *Z. abelicea* trees. We were able to show that although some areas seem to experience a relatively strong influence of human activities, they nevertheless maintained a high diversity of species due to the co-occurring presence of both eutrophication-tolerant and -sensitive species. Our study paves the way for further and more in-depth research to explain the patterns observed.

Acknowledgements. We would like to thank H.-R. Siegel for permission to use his photograph in Fig. 2. We also wish to thank the anonymous reviewers who greatly helped to improve the quality of the previous versions of this paper. Study permits were granted by the Greek Ministry of Environment under permit nos 174101/5060 and 155924/1184.

Author Contributions. Conceptualization: D. Gwiazdowicz, G. Kozłowski and L. Fazan; plant material collection: D. Gwiazdowicz, D. Ghosn and H. Remoundou; data analyses: Y. Fragnière, G. Kozłowski, W. Fałtynowicz and L. Fazan; bryophyte identification: A. Rusińska and P. Urbański; lichen identification: W. Fałtynowicz; writing, review and editing: L. Fazan, G. Kozłowski, D. Gwiazdowicz, G. Garfi, S. Pasta, W. Fałtynowicz, A. Rusińska. All authors have read and agreed to the published version of the manuscript.

Author ORCID.  Laurence Fazan, 0000-0002-2981-1806; Yann Fragnière, 0000-0003-4167-379X; Dariusz J. Gwiazdowicz, 0000-0002-0064-2316; Wiesław Fałtynowicz, 0000-0003-3636-6218; Dany Ghosn, 0000-0003-1898-9681; Paweł Urbański, 0000-0002-5199-8021; Guiseppa Garfi, 0000-0003-0466-4288; Salvatore Pasta, 0000-0003-3265-9072; Gregor Kozłowski, 0000-0003-4856-2005.

Availability of Data and Material. The raw dataset is available online as Supplementary Material Table S5.

Funding. This research was partially funded by Fondation Franklinia.

Supplementary Material. To view Supplementary Material for this article, please visit <https://doi.org/10.1017/S0024282922000159>.

References

- Abbott BFM (2009) Checklist of the lichens and lichenicolous fungi of Greece. *Bibliotheca Lichenologica* **103**, 1–368.
- Agou VD, Varouchakis EA and Hristopoulos DT (2019) Geostatistical analysis of precipitation in the island of Crete (Greece) based on a sparse monitoring network. *Environmental Monitoring and Assessment* **191**, 353.
- Anderson MJ and Willis TJ (2003) Canonical analysis of principal coordinates: a useful method of constrained ordination for ecology. *Ecology* **84**, 511–525.
- Aragón G, Sarrion FJ and Martínez I (2004) Epiphytic lichens on *Juniperus oxycedrus* L. in the Iberian Peninsula. *Nova Hedwigia* **78**, 45–56.
- Aranda SC, Gabriel R, Borges PAV, Santos AMC, de Azevedo EB, Patiño J, Hortal J and Lobo JM (2014) Geographical, temporal and environmental determinants of bryophyte species richness in the Macaronesian Islands. *PLoS ONE* **9**, e101786.
- Arcadia L (2022) *The lichens and lichenicolous fungi of Greece*. Online draft version dated 11 January 2022. URL www.lichensofgreece.com. [Accessed 28 January 2022].
- Asplund J, Sandling A, Kardol P and Wardle DA (2014) The influence of tree-scale and ecosystem-scale factors on epiphytic lichen communities across a long-term retrogressive chronosequence. *Journal of Vegetation Science* **25**, 1100–1111.
- Barbaggio S (2002) *Zelkovaphis trinacriae*, a new Eriosomatine aphid genus and species living on *Zelkova* in Sicily (*Rhynchota: Aphididae*). *Bolletino di Zoologia Agraria e Bachicoltura* **34**, 281–301.
- Barbaggio S, Cocuzza GE and Suma P (2009) *Zelkovaphis trinacriae*, an Eriosomatine aphid relict living in Sicily on *Zelkova sicula*. *Redia* **92**, 141–142.
- Bauer EM and Bergmeier E (2011) The mountain woodlands of western Crete – plant communities, forest goods, grazing impact and conservation. *Phytocoenologia* **41**, 73–105.
- Bilovitz P, Stešević D and Mayrhofer H (2010) Epiphytic lichens and lichenicolous fungi from the northern part of Montenegro. *Herzogia* **23**, 249–256.
- Bischler H (2004) Liverworts of the Mediterranean. Ecology, diversity and distribution. *Bryophytorum Bibliotheca* **61**, 1–252.
- Blockeel TL (2013) Mountains and islands: in search of bryophytes in Greece. *Field Bryology* **109**, 16–25.
- Borcard D, Gillet F and Legendre P (2011) *Numerical Ecology with R*. New York: Springer Science.
- Büttler R, Lachat T, Krumm F, Kraus D and Larrieu L (2020) *Guide de Poche des Dendromicrohabitats. Description et Seuil de Grandeur pour leur Inventaire*. Birmensdorf: Swiss Federal Institute for Forest, Snow and Landscape Research WSL.
- Camarero JJ, Sangüesa-Barreda G, Montiel-Molina C, Seijo F and López-Sáez JA (2018) Past growth suppressions as proxies of fire incidence in relict Mediterranean black pine forests. *Forest Ecology and Management* **413**, 9–20.
- Cardós JH, Martínez I, Calvo V and Aragón G (2016) Epiphyte communities in Mediterranean fragmented forests: importance of the fragment size and the surrounding matrix. *Landscape Ecology* **31**, 1975–1995.
- Christensen SN (2000) Lichens from thickets of *Buxus*, *Carpinus* and *Juniperus* on Mt Vourinos, Makedhonia, North Central Greece. *Willdenowia* **30**, 375–385.
- Christensen SN (2007) Lichens of *Cupressus sempervirens* on the Aegean islands of Kriti and Kos, Greece. *Willdenowia* **37**, 577–585.
- Christensen SN (2014) The epiphytic lichen flora of *Platanus orientalis* stands in Greece. *Willdenowia* **44**, 209–227.
- Christensen SN (2018) New or rarely reported lichens for Thrace, Greece. *Herzogia* **31**, 390–394.
- Christensen SN and Svane S (2007) Contribution to the knowledge of the lichen flora of Crete (Kriti), Greece. *Willdenowia* **37**, 587–593.
- Clauzade G and Roux C (1985) *Likenoj de Okcidenta Europo. Illustrata determinlibro*. Saint-Sulpice-de-Royan: Société Botanique du Centre Ouest.
- Coppey A (1907) Matériaux pour servir à l'étude de la flore et la géographie botanique de l'Orient. Troisième fascicule. Contribution à l'étude des muscinées de la Grèce. *Bulletin des Sciences de la Société des Sciences de Nancy* **8**, 293–360.
- Coppey A (1909) Matériaux pour servir à l'étude de la flore et la géographie de l'Orient. Cinquième fascicule. Deuxième contribution à l'étude des muscinées de la Grèce. *Bulletin des Sciences de la Société des Sciences de Nancy* **10**, 83–130.
- Düll R (1979) Neue Übersicht zur Moosflora der Insel Kreta (Aegaeis). *Journal of Bryology* **10**, 491–509.
- Düll R (1984) Distribution of the European and Macaronesian mosses (*Bryophytina*), Part I. *Bryologische Beiträge* **4**, 1–109.
- Düll R (1985) Distribution of the European and Macaronesian mosses (*Bryophytina*), Part II. *Bryologische Beiträge* **5**, 110–233.
- Düll R (1991) Zeigerwerte von Laub- und Lebermoosen. In Ellenberg H, Weber HE, Düll R, Wirth V, Werner W and Paulissen D (eds), *Zeigerwerte von Pflanzen in Mitteleuropa. (Scripta Geobotanica, Band 18, 2)*. Göttingen: Verlag Erich Goltze KG, pp. 175–215.
- Düll R (1995) Moose Griechenlands (Bryophytes of Greece). *Bryologische Beiträge* **10**, 1–229.
- Egli B (1993) *Ökologie der dolinen im gebirge Kretas (Griechenland)*. Ph.D. thesis, University of Zürich.

- Egli B** (1997) A project for the preservation of *Zelkova abelicea* (Ulmaceae), a threatened endemic tree species from the mountains of Crete. *Bocconea* **5**, 505–510.
- Ellis CJ** (2012) Lichen epiphyte diversity: a species, community and trait-based review. *Perspectives in Plant Ecology, Evolution and Systematics* **14**, 131–152.
- Fazan L, Stoffel M, Frey DJ, Pirintzos S and Kozłowski G** (2012) Small does not mean young: age estimation of severely browsed trees in anthropogenic Mediterranean landscapes. *Biological Conservation* **153**, 97–100.
- Fazan L, Remoundou I, Dhoshn D, Nikoli T, Pasta S, Garfi G and Kozłowski G** (2022) Understanding the factors influencing the growth of *Zelkova abelicea* in browsing exclosures. *Global Ecology and Conservation* **34**, e02031.
- Fick SE and Hijmans RJ** (2017) WorldClim 2: new 1-km spatial resolution climate surfaces for global land areas. *International Journal of Climatology* **37**, 4302–4315.
- Fritz Ö, Brunet J and Caldiz M** (2009) Interacting effects of tree characteristics on the occurrence of rare epiphytes in a Swedish beech forest area. *Bryologist* **112**, 488–505.
- Giordani P** (2006) Variables influencing the distribution of epiphytic lichens in heterogeneous areas: a case study for Liguria, NW Italy. *Journal of Vegetation Science* **17**, 195–206.
- Godefroid S and Dana E** (2006) Can Ellenberg's indicator values for Mediterranean plants be used outside their region of definition? *Journal of Biogeography* **34**, 62–68.
- Goedecke F and Bergmeier E** (2018) Ecology and potential distribution of the Cretan endemic tree species *Zelkova abelicea*. *Journal of Mediterranean Ecology* **16**, 15–26.
- Gradstein SR** (1971) New or otherwise interesting bryophytes from Crete. *Mededelingen van het Botanisch Museum en Herbarium van de Rijksuniversiteit te Utrecht* **355**, 663–679.
- Grandcolas P, Nattier R and Trewick S** (2014) Relict species: a relict concept? *Trends in Ecology and Evolution* **29**, 655–663.
- Grube M, Lindblom L and Mayrhofer H** (2001) Contribution to the lichen flora of Crete: a compilation of references and some new records. *Studia Geobotanica* **20**, 41–59.
- Hauck M and Wirth V** (2010) Preference of lichens for shady habitats is correlated with intolerance to high nitrogen levels. *Lichenologist* **42**, 475–484.
- Henriques DSG, Borges PAV, Ah-Peng C and Gabriel R** (2016) Mosses and liverworts show contrasting elevational distribution patterns in an oceanic island (Terceira, Azores): the influence of climate and space. *Journal of Bryology* **38**, 183–194.
- Hollander M and Wolfe DA** (1973) *Nonparametric Statistical Methods*. Hoboken, New Jersey: John Wiley & Sons.
- Hostert P, Röder A, Hill J, Udelhoven T and Tsiourlis G** (2003) Retrospective studies of grazing-induced land degradation: a case study in central Crete, Greece. *International Journal of Remote Sensing* **24**, 4019–4034.
- Index Fungorum Partnership** (2022) *Index Fungorum*. [WWW resource] URL <http://www.indexfungorum.org> [Accessed 4 February 2022].
- Johansson P, Rydin H and Thor G** (2007) Tree age relationships with epiphytic lichen diversity and lichen life history traits on ash in southern Sweden. *Ecoscience* **14**, 81–91.
- John V, Güvenç S and Türk A** (2020) Additions to the checklist and bibliography of the lichens and lichenicolous fungi of Turkey. *Archive for Lichenology* **19**, 1–32.
- Kermit T and Gauslaa Y** (2001) The vertical gradient of bark pH of twigs and macrolichens in a *Picea abies* canopy not affected by acid rain. *Lichenologist* **33**, 353–359.
- Király I, Nascimbene J, Tinya F and Ódor P** (2013) Factors influencing epiphytic bryophyte and lichen species richness at different spatial scales in managed temperate forests. *Biodiversity and Conservation* **22**, 209–223.
- Kleinig H** (1966) Beitrag zur Kenntnis der Flechtenflora von Kreta. *Nova Hedwigia* **11**, 513–526.
- Körner W, Dupouey JL, Dambrine E and Benoit M** (1997) Influence of past land use on the vegetation and soils of present day forest in the Vosges Mountains, France. *Journal of Ecology* **85**, 351–358.
- Kozłowski G and Gratzfeld J** (2013) *Zelkova – an Ancient Tree*. *Global Status and Conservation Action*. Fribourg: Natural History Museum Fribourg.
- Kozłowski G, Frey D, Fazan L, Egli B, Bétrisey S, Gratzfeld J, Garfi G and Pirintzos S** (2014) The Tertiary relict tree *Zelkova abelicea* (Ulmaceae): distribution, population structure and conservation status on Crete. *Oryx* **48**, 80–87.
- Kozłowski G, Bétrisey S, Song YG, Fazan L and Garfi G** (2018) *The Red List of Zelkova*. Fribourg: Natural History Museum Fribourg.
- Kraus D, Büttler R, Krumm F, Lachat T, Larrieu L, Mergner U, Paillet Y, Rydkvist T, Schuck A and Winter S** (2016) *Catalogue of tree microhabitats. Reference field list*. Integrate+ technical paper. Freiburg: European Forest Institute.
- Kukwa M** (2011) *The Lichen Genus Ochrolechia in Europe*. Gdansk: Fundacja Rozwoju Uniwersytetu Gdanskiego.
- Larrieu L, Paillet Y, Winter S, Büttler R, Kraus D, Krumm F, Lachat T, Michel AK, Regnery B and Vandekerkhove K** (2018) Tree related microhabitats in temperate and Mediterranean European forests: a hierarchical typology for inventory standardization. *Ecological Indicators* **84**, 194–207.
- Legakis A and Kypriotakis Z** (1994) A biogeographical analysis of the Island of Crete, Greece. *Journal of Biogeography* **21**, 441–445.
- Legendre P and Anderson MJ** (1999) Distance-based redundancy analysis: testing multispecies responses in multifactorial ecological experiments. *Ecological Monographs* **69**, 1–24.
- Legendre P and Legendre L** (2012) *Numerical Ecology*, 3rd Edn. Amsterdam and Oxford: Elsevier.
- Legendre P, Oksanen J and ter Braak CJF** (2011) Testing the significance of canonical axes in redundancy analysis. *Methods in Ecology and Evolution* **2**, 269–277.
- Lie MH, Arup U, Grytnes JA and Ohlson M** (2009) The importance of host tree age, size and growth rate as determinants of epiphytic lichen diversity in boreal spruce forests. *Biodiversity and Conservation* **18**, 3579–3596.
- Lindenmayer DB and Laurance WF** (2017) The ecology, distribution, conservation and management of large old trees. *Biological Reviews* **92**, 1434–1458.
- Loppi S and De Dominicis V** (1996) Lichens as long-term biomonitors of air quality in central Italy. *Acta Botanica Neerlandica* **45**, 563–570.
- Loppi S, Pirintzos SA and De Dominicis V** (1997) Analysis of the distribution of epiphytic lichens on *Quercus pubescens* along an altitudinal gradient in a Mediterranean area (Tuscany, central Italy). *Israel Journal of Plant Sciences* **45**, 53–58.
- Lyrantzis GA** (1996) Human impact trend in Crete: the case of Psiloritis Mountain. *Environmental Conservation* **23**, 140–148.
- Maceda-Veiga A and Gómez-Bolea A** (2017) Small, fragmented native oak forests have better preserved epiphytic lichen communities than tree plantations in a temperate sub-oceanic Mediterranean climate region. *Bryologist* **120**, 191–201.
- Madéra P, Habrová H, Šenfeldr M, Kholová I, Lvončík S, Ehrenbergerová L, Roth M, Nadezhdina N, Némec P, Rosenthal J, et al.** (2019) Growth dynamics of endemic *Dracaena cinnabari* Balf. f. of Socotra Island suggest essential elements for a conservation strategy. *Biologia* **74**, 339–349.
- Mai DH** (1991) Palaeofloristic changes in Europe and the confirmation of the Arctotertiary–Palaeotropical geofloral concept. *Review of Palaeobotany and Palynology* **68**, 29–36.
- Matos P, Pinho P, Aragón G, Martínez I, Nunes A, Soares AMVM, Branquinho C** (2014) Lichen traits responding to aridity. *Journal of Ecology* **103**, 451–458.
- McCune B and Keon D** (2002) Equations for potential annual direct incident radiation and heat load. *Journal of Vegetation Science* **13**, 603–606.
- McCune B, Rosentreter R, Ponzetti JM and Shaw DC** (2000) Epiphyte habitats in an old conifer forest in western Washington, U.S.A. *Bryologist* **103**, 417–427.
- Medina NG, Albertos B, Lara F, Mazimpaka V, Garilleti R, Draper D and Hortal J** (2014) Species richness of epiphytic bryophytes: drivers across scales on the edge of the Mediterranean. *Ecography* **37**, 80–93.
- Mucina L, Valachovic M, Dimopoulos P, Tuibsch A and Pisut I** (2000) Epiphytic lichen and moss vegetation along an altitude gradient on Mount Aenos (Kefallinia, Greece). *Biologia, Bratislava* **55**, 43–48.
- Nascimbene J, Marini L, Motta R and Nimis PL** (2009) Influence of tree age, tree size and crown structure on lichen communities in mature Alpine spruce forests. *Biodiversity and Conservation* **18**, 1509–1522.
- Nascimbene J, Marini L and Nimis PL** (2010) Epiphytic lichen diversity in old-growth and managed *Picea abies* stands in Alpine spruce forests. *Forest Ecology and Management* **260**, 603–609.

- Nimis PL (2016) *The Lichens of Italy. A Second Annotated Catalogue*. Trieste: EUT.
- Nimis PL and Martellos S (2001) Testing the predictivity of ecological indicator values. A comparison of real and 'virtual' relevés of lichen vegetation. *Plant Ecology* **157**, 165–172.
- Nimis PL and Martellos S (2021) *ITALIC: the information system on Italian lichens. Version 5.0*. Department of Life Sciences, University of Trieste. [WWW document] URL <http://dryades.units.it/italic>. [Accessed 25 February 2021].
- Nordén B, Jordal JB and Evju M (2018) Can large unmanaged trees replace ancient pollarded trees as habitats for lichenized fungi, non-lichenized fungi and bryophytes? *Biodiversity and Conservation* **27**, 1095–1114.
- Nyholm E (1965) *Illustrated Moss Flora of Fennoscandia II, Musci. Fasc. 5*. Lund: Botanical Society of Lund, CWK Gleerup, pp. 406–647.
- Nyholm E (1998) *Illustrated Flora of Nordic Mosses. Fasc. 4*. Copenhagen and Lund: Nordic Bryological Society, pp. 249–405.
- Obermayer W (1997) Lichenes Graecensis, Fasc. 5 (Nos 81–100). *Fritschiana* **11**, 1–6.
- Oksanen J (2012) *Constrained ordination: tutorial with R and vegan*. [WWW document] URL https://www.mooreecology.com/uploads/2/4/2/1/24213970/constrained_ordination.pdf. [Accessed 3 December 2020].
- Oksanen J (2015) *Multivariate analysis of ecological communities in R: vegan tutorial*. [WWW document] URL <https://www.mooreecology.com/uploads/2/4/2/1/24213970/vegantutor.pdf>. [Accessed 3 December 2020].
- Paillet Y, Bergès L, Hjältén J, Ódor P, Avon C, Bernhardt-Römermann M, Bijlsma RJ, de Bruyn L, Fuhr M, Grandin U, *et al.* (2010) Biodiversity differences between managed and unmanaged forests: meta-analysis of species richness in Europe. *Conservation Biology* **24**, 101–112.
- Paoli L, Pirintzos SA, Kotzabasis K, Pisani T, Navakoudis E and Loppi S (2010) Effects of ammonia from livestock farming on lichen photosynthesis. *Environmental Pollution* **158**, 2258–2265.
- Papp B, Lökös L, Rajczy M, Chatzinikolaki E and Damanakis M (1999) Bryophytes and lichens of some phrygana and maquis stands of Crete (Greece). *Studia Botanica Hungarica* **29**, 69–78.
- Pinho P, Bergamini A, Carvalho P, Branquinho C, Stofer S, Scheidegger C and Máguas C (2012) Lichen functional groups as ecological indicators of the effects of land-use in Mediterranean ecosystems. *Ecological Indicators* **15**, 36–42.
- Pirintzos SA, Diamantopoulos J and Stamou GP (1993) Analysis of the vertical distribution of epiphytic lichens on *Pinus nigra* (Mount Olympos, Greece) along an altitudinal gradient. *Vegetatio* **109**, 63–70.
- Pirintzos SA, Loppi S, Dalaka A and De Dominicis V (1998) Effects of grazing on epiphytic lichen vegetation in a Mediterranean mixed evergreen sclerophyllous and deciduous shrubland (northern Greece). *Israel Journal of Plant Sciences* **46**, 303–307.
- Preston CD (1981) A check-list of Greek liverworts. *Journal of Bryology* **11**, 537–553.
- Preston CD (1984) A check-list of Greek mosses. *Journal of Bryology* **13**, 43–95.
- R Core Team (2020) *R: a Language and Environment for Statistical Computing*. R Foundation for Statistical Computing, Vienna, Austria. [WWW resource] URL <https://www.R-project.org>
- Rackham O and Moody J (1996) *The Making of the Cretan Landscape*. Manchester: Manchester University Press.
- Ranius T, Johansson P, Berg N and Niklasson M (2008) The influence of tree age and microhabitat quality on the occurrence of crustose lichens associated with old oaks. *Journal of Vegetation Science* **19**, 653–662.
- Real R and Vargas JM (1996) The probabilistic basis of Jaccard's index of similarity. *Systematic Biology* **45**, 380–385.
- Rejzék M, Svátek M, Šebesta J, Adolt R, Maděra P and Matula R (2016) Loss of a single tree species will lead to an overall decline in plant diversity: effect of *Dracaena cinnabari* Balf. f. on the vegetation of Socotra Island. *Biological Conservation* **196**, 165–172.
- Ros-Espin RM, Mazimpaka V, Abou-Salama U, Aleffi M, Blockeel TL, Brugués M, Cros RM, Dia MG, Dirkse GM, Draper I, *et al.* (2013) Mosses of the Mediterranean, an annotated checklist. *Cryptogamie Bryologie* **34**, 99–283.
- Sabovljević M, Natcheva R, Dihoru G, Tsakiri E, Dragičević S, Erdağ A and Papp B (2008) Check-list of mosses of SE Europe. *Phytologia Balcanica* **14**, 207–244.
- Sevgi E, Yılmaz OY, Çobanoğlu Özyiğitoğlu G, Tecimen HB and Sevgi O (2019) Factors influencing epiphytic lichen species distribution in a managed Mediterranean *Pinus nigra* Arnold Forest. *Diversity* **11**, 59.
- Sipman HJM and Raus T (1999) A lichenological comparison of the Paros and Santorini island groups (Aegean, Greece), with annotated checklist. *Willdenowia* **29**, 239–297.
- Sipman HJM and Raus T (2002) An inventory of the lichen flora of Kalimnos and parts of Kos (Dodecanisos, Greece). *Willdenowia* **32**, 351–392.
- Śliwa L (2006) Lichen survey on pastures in the Tatra National Park (Poland) – methods and preliminary results. In Godzik B (ed.), *Tatry National Park and Other Mountains Protection Areas. 2*. Kraków–Zakopane: Tatrzański Park Narodowy, Polskie Towarzystwo Przyjaciół Nauk o Ziemi Oddział w Krakowie, pp. 47–50. [in Polish with English summary]
- Smith AJE (1978) *The Moss Flora of Britain & Ireland*. Cambridge: Cambridge University Press.
- Smith CW, Aptroot A, Coppins BJ, Fletcher A, Gilbert OL, James PW and Wolsley PA (2009) *The Lichens of Great Britain and Ireland*. London: British Lichen Society.
- Sondergaard P and Egli B (2006) *Zelkova abelicea* (Ulmaceae) in Crete: floristics, ecology, propagation and threats. *Willdenowia* **36**, 317–322.
- Spribile T, Schultz M, Breuss O and Bergmeier E (2006) Notes on the lichens and lichenicolous fungi of western Crete (Greece). *Herzogia* **19**, 125–148.
- Svoboda D, Peksa O and Veselá J (2010) Epiphytic lichen diversity in central European oak forests: assessment of the effects of natural environmental factors and human influences. *Environmental Pollution* **158**, 812–819.
- Tang CQ, Peng MC, He LY, Ohsawa M, Wang CY, Xie TH, Li WS, Li JP, Zhang HY, Li Y, *et al.* (2013) Population persistence of a Tertiary relict tree *Tetracentron sinense* on the Ailao Mountains, Yunnan, China. *Journal of Plant Research* **126**, 651–659.
- van Herk CM (2001) Bark pH and susceptibility to toxic air pollutants as independent causes of changes in epiphytic lichen composition in space and time. *Lichenologist* **33**, 419–442.
- Varouchakis EA, Corzo GA, Karatzas GP and Kotsopoulou A (2018) Spatio-temporal analysis of annual rainfall in Crete, Greece. *Acta Geophysica* **66**, 319–328.
- Vieira C, Aguiar FC, Portela AP, Monteiro J, Raven PJ, Holmes NTH, Cambra J, Flor-Arnau N, Chauvin C, Loriot S, *et al.* (2016) Bryophyte communities of Mediterranean Europe: a first approach to model their potential distribution in highly seasonal rivers. *Hydrobiologia* **812**, 27–43.
- Vondrák J, Guttová A and Mayrhofer H (2008) A further contribution to the knowledge of lichen-forming and lichenicolous fungi in Crete. *Herzogia* **21**, 105–124.
- Werner J (1998) *Didymodon cordatus* and some other bryophytes from Crete. *Journal of Bryology* **20**, 249–251.
- Yavuz M and Çobanoğlu G (2018) Lichen diversity of Gölcük Nature Park (Isparta), including new records for Turkey. *Muzeul Olteniei Craiova. Oltenai, Studii si Comunicari, Stiintele Naturii* **34**, 57–66.
- Yazici K and Aptroot A (2008) Corticolous lichens of the city of Giresun with descriptions of four species new to Turkey. *Mycotaxon* **105**, 95–104.
- Zedda L and Sipman H (2001) Lichens and lichenicolous fungi on *Juniperus oxycedrus* L. in Campu Su Disterru (Sardinia, Italy). *Bocconea* **13**, 309–328.